

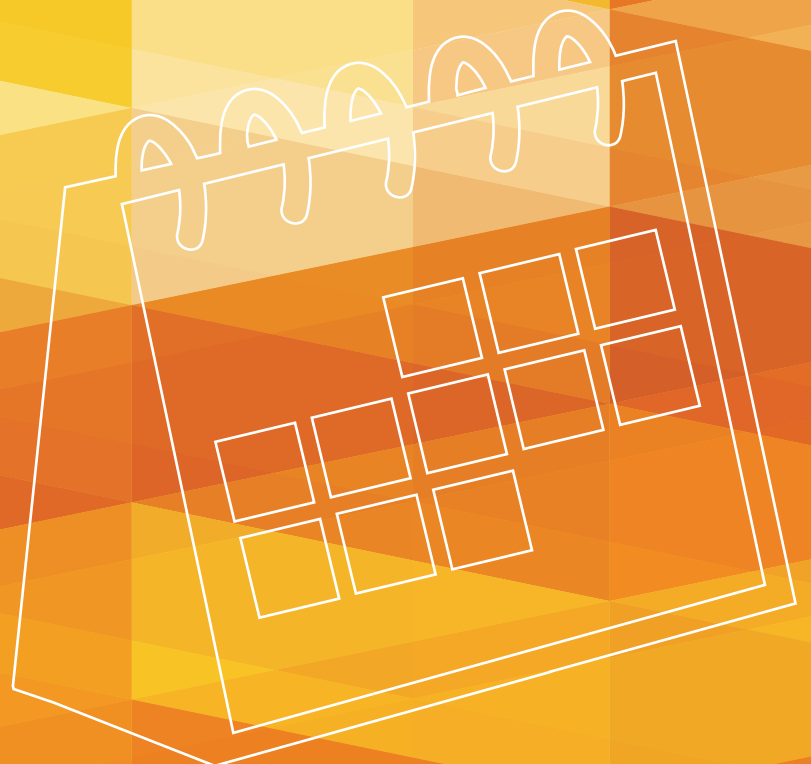


# The Organisation of School Time in Europe

*Primary and General  
Secondary Education*

*2016/17*

*Eurydice – Facts and Figures*







# **The Organisation of School Time in Europe**

**Primary and  
General Secondary Education**

**2016/17**

**Eurydice – Facts and Figures**

This document is published by the Education, Audiovisual and Culture Executive Agency (EACEA, Education and Youth Policy Analysis).

**Please cite this publication as:**

European Commission/EACEA/Eurydice, 2016. *The Organisation of School Time in Europe. Primary and General Secondary Education – 2016/17*. Eurydice Facts and Figures. Luxembourg: Publications Office of the European Union.

ISBN 978-92-9492-335-6

ISSN 2443-5309

doi:10.2797/229426

EC-AH-16-001-EN-N

Text completed in August 2016.

© Education, Audiovisual and Culture Executive Agency, 2016.

Reproduction is authorized provided the source is acknowledged.

Education, Audiovisual and Culture Executive Agency  
Education and Youth Policy Analysis  
Avenue du Bourget 1 (BOU2 – Unit A7)  
B-1049 Brussels  
Tel. +32 2 299 50 58  
Fax +32 2 292 19 71  
E-mail: [eacea-eurydice@ec.europa.eu](mailto:eacea-eurydice@ec.europa.eu)  
Website: <http://ec.europa.eu/eurydice>

## KEY POINTS

---

### **In half of the countries, the school year starts at the beginning of September**

Despite some differences, countries across Europe show many similarities regarding the structure of the school year. In 11 countries/regions, it generally starts between 8 August and the end of August. In 16 European countries/regions, the school year officially starts on the first of September. In four countries (Austria, Croatia, Ireland and Slovakia), the school starts during the first week of September. In nine countries/regions, the starting date is usually around mid-September: this is the case in much of Southern Europe (Cyprus, Greece, Italy, Malta, Portugal and Turkey) but also in Bulgaria, Luxembourg and Romania. In Malta, children return to school at the end of September. In Austria, Germany, Spain, France, Italy, the Netherlands, Poland, Slovenia, Slovakia and Switzerland, the beginning and the end of the school year vary significantly according to the regions. In Germany, although there is an official starting date on 1st August, in reality schools in the different *Länder* begin between 8 August and 13 September.

See Figure 1.

### **The distribution of holidays during the school year varies between countries with the exception of the Christmas break**

In addition to the summer break, there are four other main periods of school holidays across Europe: the autumn holidays, Christmas and New Year's, winter/Carnival holidays as well the spring/Easter holidays. With the exception of the Christmas/New Year's holiday, other school breaks differ both in length and timing. As some of these holidays are related to flexible calendar dates (Carnival and Easter), their timing changes slightly from year to year. As well as these common holidays, all countries offer additional days of holiday for public or religious occasions.

In the autumn, children have one week of holidays in 17 countries/regions; in the other countries, it varies between two days (e.g. Czech Republic) to three weeks (Switzerland) or no holidays at all (e.g. Austria and Croatia). At Christmas, nearly all countries offer two weeks of holidays; in a few countries, there is only one week (e.g. Hungary and Poland) and three weeks in the case of Sweden. The length of the winter holidays is one week in 18 countries, but it can also vary between no holidays in some countries (e.g. Greece, Croatia and Cyprus) to two weeks of holidays in France and Poland. For the spring/Easter holidays, one week of holidays is organised in 15 countries, two weeks in 13 countries; in the others, between 4 days (e.g. Finland and Slovakia) to three weeks in Switzerland.

See Figure 1.

### **Regional and local variations exist within some countries**

The periods and dates of school holidays may vary within a country. In some countries, such as Germany, Spain, Italy, Austria, Switzerland, regional authorities make these decisions. In Sweden and Norway, the responsibility lies with the municipalities. However, in general, the number of days of teaching is fixed at central level.

In the Czech Republic, Germany, France, Italy, the Netherlands, Poland, Slovenia (for the winter holidays), Slovakia and Switzerland, the central authorities fix different dates for some periods of holidays according to the geographical area.

Despite some differences in the length of holidays, the pattern of holidays over the school year is similar for both primary and secondary education.

## **The length of the summer holidays varies a lot across Europe**

In Europe, the school year generally ends between the end of May and the second half of July. Mid-June is the time when the summer break begins in most countries. The length of the summer holidays varies significantly between countries: from 6 weeks in some German *Länder*, the Netherlands, the United Kingdom (England, Wales and Scotland) and Liechtenstein up to 13 weeks in Latvia, Lithuania, Portugal, Bosnia and Herzegovina and Turkey, 14 weeks in Italy and even 15 weeks in Bulgaria (for primary education). The summer holidays are usually shorter in those countries where students have more frequent and longer holidays during the school year.

Some countries show differences in the length of summer holidays depending on the level of education. In secondary education, students normally study longer than in primary education, possibly linked to end of year examination requirements.

In Bulgaria, Greece, Cyprus, Lithuania, Portugal, Switzerland, Serbia and Iceland, the summer holidays for students in primary education last longer than for those in secondary education, while the opposite is true in Bosnia and Herzegovina (Republic of Srpska), Ireland and Iceland.

See Figure 2.

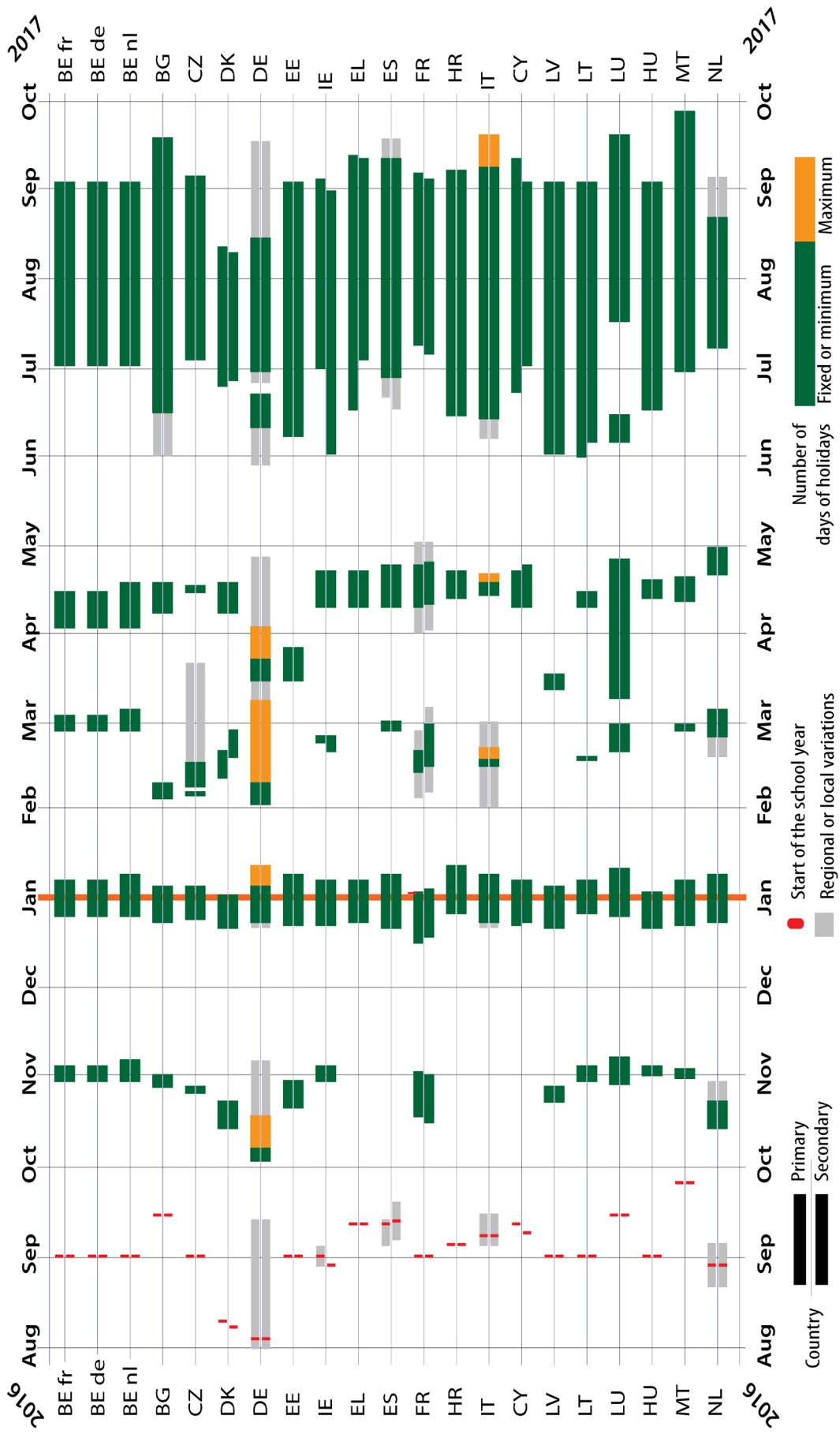
## **Some variations in the number of the school days across Europe**

The number of school days varies between 162 days in France (except in upper secondary education) and 200 days in Denmark and Italy. In around half the countries, it is between 170 and 180 days; in 15 countries, the number varies between 181 and 190 days. In a few countries, pupils have more than 191 school days per year. In general, the number of school days is the same in primary and secondary education but there are a few exceptions: in Belgium, France (upper secondary education) and Bosnia and Herzegovina (Republica Srpska), the number of schools days is higher in secondary education than in primary.

The opposite (fewer school days in secondary education than in primary education) is observed in Ireland, Greece, Cyprus, the Netherlands and Poland.

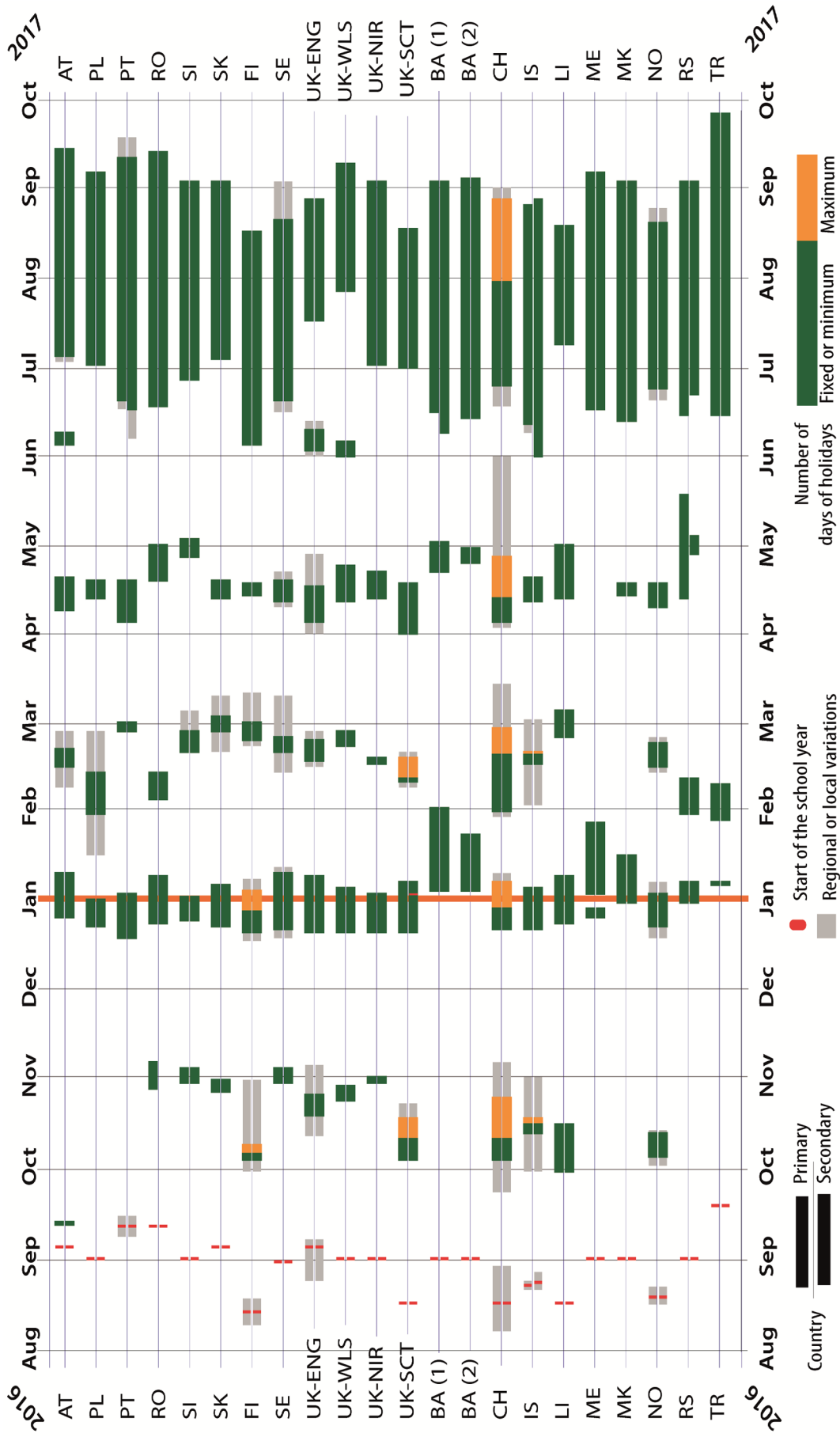
See Figure 3.

Figure 1: Length of the school year and distribution of holidays, general education, ISCED 1-3, 2016/17



NB: Denmark, Hungary and Latvia: The distinction is made between primary and lower secondary education (single structure) on one hand and upper secondary on the other hand.

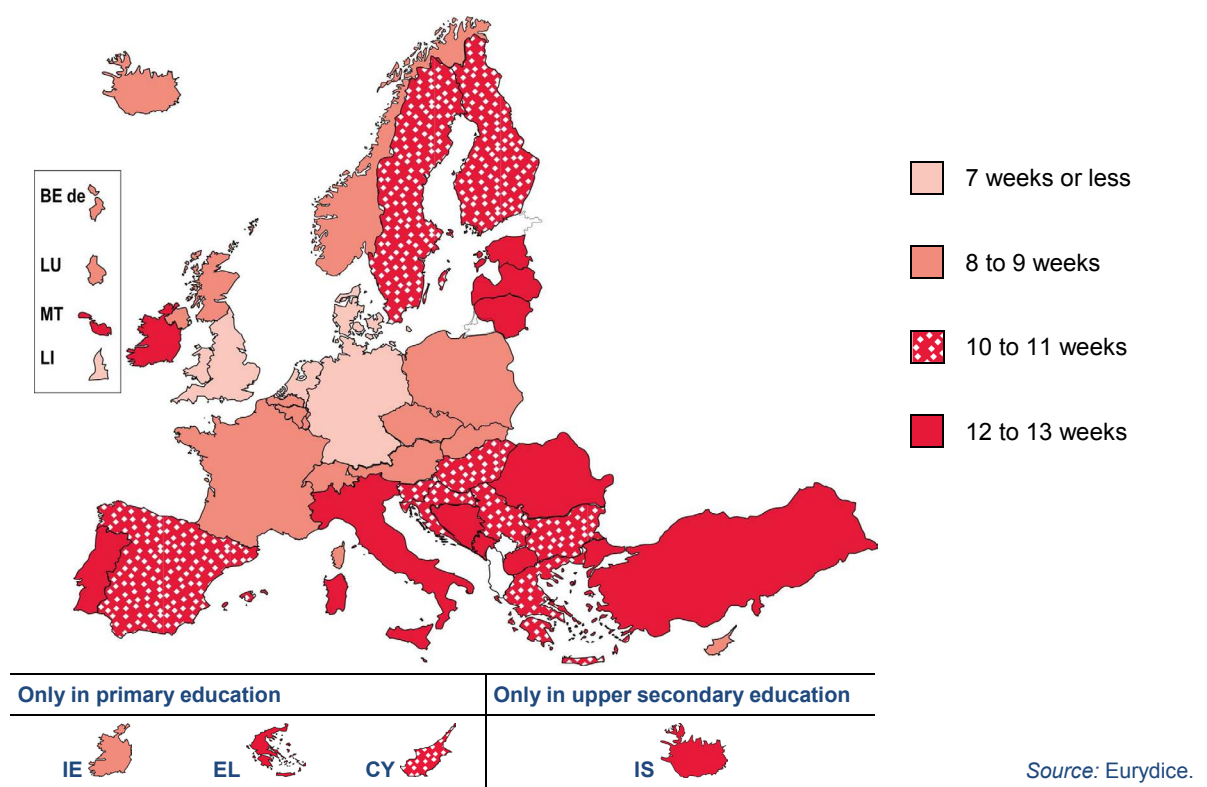
Figure 1 (continued): Length of the school year and distribution of holidays, ISCED 1-3, 2015/16



NB: Slovenia, Sweden, Serbia and Iceland: The distinction is made between primary and lower secondary education (single structure) on one hand and upper secondary on the other hand.



**Figure 2: Length of summer holidays (in weeks), primary and secondary general education, 2016/17**



**Country specific note**

**Bulgaria:** Between 11 and 15 weeks in primary education.  
**Switzerland:** Between 5 and 9 weeks.

Source: Eurydice.

Figure 3: Number of school days, 2016/17



## AUSTRIA

### Organisation of school time in primary and general secondary education 2016/17 school year

	Primary education	General secondary education
<b>Starting date of students' school year</b>	5 September 2016: Burgenland, Niederösterreich, Wien 12 September 2016: Kärnten, Oberösterreich, Salzburg, Steiermark, Tirol, Vorarlberg	5 September 2016: Burgenland, Niederösterreich, Wien 12 September 2016: Kärnten, Oberösterreich, Salzburg, Steiermark, Tirol, Vorarlberg
<b>End of students' school year</b>	30 June 2017: Burgenland, Niederösterreich, Wien 7 July 2017: Kärnten, Oberösterreich, Salzburg, Steiermark, Tirol, Vorarlberg	30 June 2017: Burgenland, Niederösterreich, Wien 7 July 2017: Kärnten, Oberösterreich, Salzburg, Steiermark, Tirol, Vorarlberg
<b>Christmas/New Year</b>	2 weeks 24 December 2016 – 7 January 2017	2 weeks 24 December 2016 – 7 January 2017
<b>Winter/Carnival</b>	1 week 6-11 February 2017: Niederösterreich, Wien 13-18 February 2017: Burgenland, Kärnten, Salzburg, Tirol, Vorarlberg 20-25 February 2017: Oberösterreich, Steiermark	1 week 6-11 February 2017: Niederösterreich, Wien 13-18 February 2017: Burgenland, Kärnten, Salzburg, Tirol, Vorarlberg 20-25 February 2017: Oberösterreich, Steiermark
<b>Spring/Easter</b>	1 week 8-18 April 2017	1 week 8-18 April 2017
<b>Third term</b>	4 days 3-6 June 2017	4 days 3-6 June 2017
<b>Summer</b>	About 9 weeks 1 July – 3 September 2017: Burgenland, Niederösterreich, Wien 8 July – 10 September 2017: Kärnten, Oberösterreich, Salzburg, Steiermark, Tirol, Vorarlberg	About 9 weeks 1 July – 3 September 2017: Burgenland, Niederösterreich, Wien 8 July – 10 September 2017: Kärnten, Oberösterreich, Salzburg, Steiermark, Tirol, Vorarlberg
<b>Public/religious holidays</b>	1 November 2016 2 November 2016 8 December 2016 1 May 2017 25 May 2017 15 June 2017 1 extra religious holiday per province ( <i>Land</i> )	1 November 2016 2 November 2016 8 December 2016 1 May 2017 25 May 2017 15 June 2017 1 extra religious holiday per province ( <i>Land</i> )
<b>Starting/End date of teachers' school year</b>	The teachers' school year is the same as the pupils' school year	The teachers' school year is the same as the pupils' school year

## BELGIUM (FLEMISH COMMUNITY)

### Organisation of school time in primary and general secondary education 2016/17

	Primary education	General secondary education
<b>Starting date of students' school year</b>	1 September 2016	1 September 2016
<b>End of students' school year</b>	30 June 2017	30 June 2017
<b>Autumn holidays</b>	1 week 31 October – 6 November 2016	1 week 31 October – 6 November 2016
<b>Christmas/New Year holidays</b>	2 weeks 26 December 2016 – 8 January 2017	2 weeks 26 December 2016 – 8 January 2017
<b>Winter/Carnival</b>	1 week 27 February – 5 March 2017	1 week 27 February – 5 March 2017
<b>Spring/Easter</b>	2 weeks 3-17 April 2017	2 weeks 3-17 April 2017
<b>Third term</b>	Between Easter holidays and Summer holidays	Between Easter holidays and Summer holidays
<b>Summer</b>	9 weeks 1 July – 31 August 2017	9 weeks 1 July – 31 August 2017
<b>Public holidays (national/religious/occasional)</b>	1 and 2 November 2016 (All Saints' Day and All Souls' Day) 11 November 2016 (Armistice Day) 17 April 2017 (Easter Monday) 1 May 2017 (Labour Day) 25-26 May 2017 (Ascension Day) 5 June 2017 (Whit Monday) + 4 days to be decided by the school	1 and 2 November 2016 (All Saints' Day and All Souls' Day) 11 November 2016 (Armistice Day) 17 April 2017 (Easter Monday) 1 May 2017 (Labour Day) 25-26 May 2017 (Ascension Day) 5 June 2017 (Whit Monday) + 4 days to be decided by the school
<b>Starting date of teachers' school year</b>	1 September 2016	1 September 2016
<b>End of teachers' school year</b>	30 June 2017	30 June 2017

## BELGIUM (FRENCH COMMUNITY)

### Organisation of school time in primary and general secondary education 2016/17 school year

	Primary education	General secondary education
<b>Starting date of students' school year</b>	1 September 2016	1 September 2016
<b>End of students' school year</b>	30 June 2017	30 June 2017
<b>Autumn holidays</b>	1 week 31 October – 4 November 2016	1 week 31 October – 4 November 2016
<b>Christmas/New Year</b>	2 weeks 26 December 2016 – 6 January 2017	2 weeks 26 December 2016 – 6 January 2017
<b>Winter/Carnival</b>	1 week 27 February – 3 March 2017	1 week 27 February – 3 March 2017
<b>Spring/Easter</b>	2 weeks 3-14 April 2017	2 weeks 3-14 April 2017
<b>Summer</b>	9 weeks 1 July – 31 August 2017	9 weeks 1 July – 31 August 2017
<b>Public/religious holidays</b>	27 September 2016 11 November 2016 17 April 2017 1 May 2017 25 May 2017 5 June 2017	27 September 2016 11 November 2016 17 April 2017 1 May 2017 25 May 2017 5 June 2017
<b>Starting date of teachers' school year</b>	1 September 2016	1 September 2016
<b>End of teachers' school year</b>	30 June 2017	30 June 2017

Source: Eurydice.

## BELGIUM (GERMAN-SPEAKING COMMUNITY)

### Organisation of school time in primary and general secondary education 2016/17 school year

	Primary education	General secondary education
<b>Starting date of students' school year</b>	1 September 2016	1 September 2016
<b>End of students' school year</b>	30 June 2017	30 June 2017
<b>Autumn holidays</b>	1 week 31 October – 4 November 2016	1 week 31 October – 4 November 2016
<b>Christmas/New Year</b>	2 weeks 26 December 2016 – 6 January 2017	2 weeks 26 December 2016 – 6 January 2017
<b>Winter/Carnival</b>	1 week 27 February – 3 March 2017	1 week 27 February – 3 March 2017
<b>Spring/Easter</b>	2 weeks 3-14 April 2017	2 weeks 3-14 April 2017
<b>Third term</b>	–	–
<b>Summer</b>	9 weeks 1 July – 31 August 2017	9 weeks 1 July – 31 August 2017
<b>Public/religious holidays</b>	11 November 2016 15 November 2016 17 April 2017 1 May 2017 25 May 2017 16 June 2017	11 November 2016 15 November 2016 17 April 2017 1 May 2017 25 May 2017 5 June 2017
<b>Starting date of teachers' school year</b>	1 September 2016	1 September 2016
<b>End of teachers' school year</b>	30 June 2017	30 June 2017

#### Additional notes:

- During the last working days of August, secondary education teachers may be consigned to conduct exams of a second chance.
- A school year has a minimum of 180 and a maximum of 184 days of school days. In 2017, the school year will have 180 days.
- As the 24 December 2016 is a religious holiday (Christmas – *Heilig Abend*), it is left to the school to choose a compensation day.

# BOSNIA AND HERZEGOVINA

## Federation of Bosnia and Herzegovina

Organisation of school time in primary and general secondary education 2016/17 school year		
	Primary education	General secondary education
<b>Starting date of students' school year</b>	1 September 2016	1 September 2016
<b>End of students' school year</b>	5 June 2017 (12 June 2017 in the final year)	12 June 2017 (8 May 2017 in the final year)
<b>Winter holidays</b>	4-27 January 2017	4-27 January 2017
<b>Spring/Easter</b>	–	–
<b>Summer holidays</b>	13 June – 31 August 2017	13 June – 31 August 2017
<b>Public/religious holidays</b>	<b>Public holidays:</b> 25 November 2016 (Statehood Day) 1-2 January 2017 (New Year) 1 March 2017 (Independence Day) 1-2 May 2017 (International Labour Day) <b>Religious holidays:</b> 12 September 2016 (Eid al-Adha) 25 December 2016 (Catholic Christmas) 11 April 2017 (Pesah) 16-17 April 2017 (Catholic and Orthodox Easter)	
<b>Starting date of teachers' school year</b>	21 August 2016	21 August 2016
<b>End of teachers' school year</b>	30 June 2017	30 June 2017

**Additional notes:**

Religious holidays are celebrated depending on the religious community.

There are some differences between the cantons within the Federation of Bosnia and Herzegovina. The given data are the most common for most cantons. Apart from these dates, each canton (ten in total) has established its own celebration day.

## BOSNIA AND HERZEGOVINA (CONTINUED)

### Republic of Srpska

#### Organisation of school time in primary and general secondary education 2016/17 school year

	Primary education	General secondary education
<b>Starting date of students' school year</b>	1 September 2016	1 September 2016
<b>End of students' school year</b>	23 June 2017 (9 June 2017 in the final year)	14 June 2017 (18 May 2017 in the final year)
<b>Winter holidays</b>	2-20 January 2017	2-20 January 2017
<b>Spring/Easter</b>	10-14 April 2017	10-14 April 2017
<b>Summer holidays</b>	24 June – 1 September 2017	15 June – 1 September 2017
<b>Public/religious holidays</b>	<p><b>Public holidays:</b>            1-2 January 2017 (New Year)            1-2 May 2017 (International Labour Day)            9 May 2017 (Europe day)</p> <p><b>Religious holidays:</b>            25 December 2016 (Catholic Christmas)            14-17 April 2017 (Catholic and Orthodox Easter)</p>	
<b>Starting date of teachers' school year</b>	21 August 2016	21 August 2016
<b>End of teachers' school year</b>	30 June 2017	30 June 2017

**Additional notes:**

Religious holidays are celebrated depending the religion community. Holidays which are dated on non-working days are not taken into account.



## BULGARIA

Organisation of school time in primary and general secondary education 2016/17 school year		
	Primary education	General secondary education
<b>Starting date of students' school year</b>	15 September 2016	15 September 2016
<b>End of students' school year</b>	Year I – IV: 31 May 2017 Year V – VIII: 15 June 2017 Year VIII*: 30 June 2017	Year VIII*: 30 June 2017 Year IX, X, XI: 30 June 2017 Year XII: 15 May 2017
<b>Autumn holidays</b>	29 October – 1 November 2016	29 October – 1 November 2016
<b>Christmas/New Year</b>	24 December 2016 – 4 January 2017	24 December 2016 – 4 January 2017
<b>Winter/Carnival</b>	4-8 February 2017	4-8 February 2017 Year XII: 4-6 February 2017
<b>Spring/Easter</b>	8-17 April 2017	8-17 April 2017 Year XII: 13-17 April 2017
<b>Summer</b>	Year I – IV: 31 May – 15 September 2017 Year V – VIII: 15 June – 15 September 2017 Year VIII*: 30 June – 15 September 2017	Year VIII*: 30 June – 15 September 2017 Year IX – XI: 30 June – 15 September 2017
<b>Public/religious holidays</b>	22 September 2016 24 December 2016 3 March 2017 1 May 2017 6 May 2017 24-25 May 2017	22 September 2016 24 December 2016 3 March 2017 1 May 2017 6 May 2017 24-25 May 2017
<b>Other dates</b>	19 May 2017: State graduation exam in Bulgarian language and literature and national external assessment after year 7 in Bulgarian language and literature 22 May 2017: Second state graduation exam and national external assessment after year 7 in mathematics	
<b>Starting date of teachers' school year</b>	See Additional Notes	See Additional Notes
<b>End of teachers' school year</b>	See Additional Notes	See Additional Notes

Source: Eurydice

### Additional notes:

**Year VIII\*** (18 study weeks) is made up of students who have been admitted, after completed year 7, to secondary schools after successfully passing admission exams. During this year they take intensive foreign language classes, the number of which prevails significantly in comparison with the number of classes assigned to the rest of the studied at this school level, subjects.

**Teachers' school year:** The length of the teachers' school year is defined at school level. The school head is responsible for setting and drawing up of the school's timetable. The most common situation is when teachers, on employment contract, are required to be present and at disposal at school at the beginning of September so that they can get prepared well in advance and deal with the school documentation for the new school year.

The end of the teachers' school year is also determined at school level. If teachers are needed to be at school in order to help, complete or close the school documentation, or if they are involved in other out-of-class activities, school projects, initiatives, etc., they usually are supposed to stay extra days after the beginning of the summer holidays for pupils.

## CROATIA

---

### Organisation of school time in primary and general secondary education 2016/17 school year

	Primary and general secondary education
<b>Starting date of students' school year</b>	5 September 2016
<b>End of students' school year</b>	14 June 2017
<b>Winter holidays</b>	27 December 2016 – 11 January 2017
<b>Spring holidays</b>	13-21 April 2017
<b>Summer holidays</b>	16 June 2017 – (to be decided in 2017)
<b>Public/religious holidays</b>	1 November 2016 (All Saints Day) 1 May 2017 (International Labour Day)
<b>Starting date of teachers' school year</b>	22 August 2016
<b>End of teachers' school year</b>	30 June 2017

Source: Eurydice.

**Additional notes:**

Starting from the school year 2010/11, counties, regional administrative units (in total 21) are allowed to request some modifications of the school calendar for the coming year (the date of the beginning of the school year and the duration of the winter break) which apply at the County level.

## CYPRUS

### Organisation of school time in primary and general secondary education 2016/17 school year

	Primary education	General secondary education
<b>Starting date of students' school year*</b>	12 September 2016	9 September 2016 (see additional notes)
<b>End of students' school year*</b>	21 June 2017	(see additional notes)
<b>Christmas/New Year</b>	2 weeks 23 December 2016 – 6 January 2017	2 weeks 24 December 2016 – 6 January 2017
<b>Spring/Easter</b>	2 weeks 10-21 April 2017	2 weeks 10-23 April 2017
<b>Summer</b>	11 weeks 22 June 2017 – 8 September 2017	9 weeks 1 July – 31 August 2017
<b>Public/religious holidays</b>	28 October 2016 30 January 2017 27 February 2017 1 May 2017 25 May 2017 5 June 2017	1 October 2016 28 October 2016 13 November 2016 30 January 2017 27 February 2017 25 March 2017 1 April 2017 1 May 2017 5 June 2017 11 June 2017
<b>Starting date of teachers' school year**</b>	5 September 2016	1 September 2016
<b>End of teachers' school year**</b>	23 June 2017	30 June 2017

Source: Eurydice.

#### Additional notes:

##### Primary education

**\*Students:** In primary education, lessons begin on the second Monday of September and end on the Wednesday before the penultimate Friday of June.

**\*\*Teachers:** Teachers in primary education need to be at school from the first Monday of September until the penultimate Friday of June.

##### Secondary Education

**\*Students:** Classes may begin on any day during the first ten days of September. The exact date in each year is specified by the Minister of Education and Culture. In lower secondary education, the school year ends on any day during the first seven days of June. In upper secondary education, the school year ends on any day during the last ten days of May. The exact date is also specified by the Minister.

**\*\*Teachers:** In general secondary education, the end of the school year is at the end of June after exams, correction of papers, result announcements. The official teachers' school year is longer than student's school year in secondary education as it includes registration days, sorting out of schools and classes and exam periods. In secondary general education, according to the law, the official school year is from 1 September each year until the 31 August next year (1 September 2016-31 August 2017).

During September 2016, the House of Representatives (i.e. Cyprus Parliament) will discuss the amendment of the regulations governing public school organisation of school time in general secondary education and will vote them into law.

## CZECH REPUBLIC

Organisation of school time in primary and general secondary education 2016/17 school year		
	Primary education	General secondary education
Starting date of students' school year	1 September 2016	1 September 2016
End of students' school year	30 June 2017	30 June 2017
Autumn holidays	26-27 October 2016	26-27 October 2016
Christmas/New Year	23 December 2016 – 2 January 2017	23 December 2016 – 2 January 2017
Winter/Carnival	3 February 2017	3 February 2017
Spring/Easter	1 week between 6 February and 19 March 2017 depending on the region (spring holiday) 13-14 April 2017 (Easter)	1 week between 6 February and 19 March 2017 depending on the region (spring holiday) 13-14 April 2017 (Easter)
Summer	1 July – 31 August 2017	1 July – 31 August 2017
Public/religious holidays	28 September 2016 28 October 2016 17 November 2016 14 and 17 April 2017 (Easter) 1 May 2017 8 May 2017	28 September 2016 28 October 2016 17 November 2016 14 and 17 April 2017 (Easter) 1 May 2017 8 May 2017
Starting date of teachers' school year	Not specified	Not specified
End of teachers' school year	Not specified	Not specified

SPECIFICATION OF TERMS FOR SPRING HOLIDAYS	
Term 2017	Regions
6-12 February	Praha 6-10, Cheb, Karlovy Vary, Sokolov, Nymburk, Jindřichův Hradec, Litoměřice, Děčín, Přerov, Frýdek-Místek
13-19 February	Kroměříž, Uherské Hradiště, Vsetín, Zlín, Praha-východ, Praha-západ, Mělník, Rakovník, Plzeň-město, Plzeň-sever, Plzeň-jih, Hradec Králové, Teplice, Nový Jičín
20-26 February	Česká Lípa, Jablonec nad Nisou, Liberec, Semily, Havlíčkův Brod, Jihlava, Pelhřimov, Třebíč, Žďár nad Sázavou, Kladno, Kolín, Kutná Hora, Písek, Náchod, Bruntál
27 February – 5 March	Mladá Boleslav, Příbram, Tábor, Prachatice, Strakonice, Ústí nad Labem, Chomutov, Most, Jičín, Rychnov nad Kněžnou, Olomouc, Šumperk, Opava, Jeseník
6-12 March	Benešov, Beroun, Rokycany, České Budějovice, Český Krumlov, Klatovy, Trutnov, Pardubice, Chrudim, Svitavy, Ústí nad Orlicí, Ostrava-město, Prostějov
13-19 March	Praha 1-5, Blansko, Brno-město, Brno-venkov, Břeclav, Hodonín, Vyškov, Znojmo, Domažlice, Tachov, Louny, Karviná

Source: Eurydice.

### Additional notes:

According to the Labour Code, the holiday for **teachers** at primary or secondary level is 8 weeks each calendar year. They take it primarily in the time of school holidays.

## DENMARK

Organisation of school time in primary and general secondary education 2016/17 school year		
	Primary and lower secondary education ( <i>Folkeskole</i> )	General secondary education ( <i>Gymnasium</i> )
<b>Starting date of students' school year</b>	10 August 2016	8 August 2016
<b>End of students' school year</b>	23 June 2017	16 May 2017 (exams afterwards)
<b>Autumn holidays</b>	15-23 October 2016 (both days inclusive)	15-23 October 2016 (both days inclusive)
<b>Christmas/New Year</b>	22 December 2016 – 1 January 2017 (both days inclusive)	22 December 2016 – 1 January 2017 (both days inclusive)
<b>Winter/Carnival</b>	11-19 February 2017 (both days inclusive)	18-26 February 2017 (both days inclusive)
<b>Spring/Easter</b>	8-17 April 2017 (both days inclusive)	8-17 April 2017 (both days inclusive)
<b>Summer</b>	Starting on 24 June 2017	After exams in June 2017
<b>Public/religious holidays</b>	1 May* 12 May 2017 25-26 May 2017 (only 25 is a public holiday) 3-5 June 2017 (both day inclusive)	12 May 2017 25-26 May 2017 (only 25 is a public holiday) 3-5 June 2017 (both day inclusive)
<b>Starting date of teachers' school year</b>	Not determined at central level – differs at the various schools/institutions. In general, teachers start a few days before pupils/students.	
<b>End of teachers' school year</b>	Not determined at central level. Usually the teachers' school year follows that of the pupils/students.	

Source: Eurydice.

### Additional notes:

The above mentioned dates for the *Folkeskole* are valid for the schools in Aarhus Municipality: <https://www.aarhus.dk/da/borger/familie-boern-og-unge/Skole/Ferier-og-fridage.aspx>. The number of holidays and public holidays in Aarhus Municipality in the school year 2016/17 (1 August to 2016 to 31 July 2017) is 166 days, including weekends and public holidays. This means that the number of school days is 200 (leap year in 2016, therefore the extra day of holiday).

The dates for upper secondary education are taken from Køge Gymnasium: <http://www.kggym.dk/om-koge-gymnasium/ferieplan/>. The number of school days in upper secondary education is also 200 per year and 166 days of holidays, public holidays and weekends (leap year in 2016, therefore the extra day of holiday).

The winter/carnival holiday can vary across the country as it depends on the municipality which usually decides whether the winter holiday is in week 7 or 8.

*Folkeskole*, schools offering comprehensive primary and lower secondary education, are free to decide on the number of holidays and their distribution, given that they offer a minimum of 200 school days each year. The Ministry of Education determines the last day of the school year, which is the case for both primary, lower secondary and general upper secondary education. In addition, the Ministry may also issue guidelines regarding the distribution of holidays.

The Constitution Day (*Grundlovsdag*) 5 June is not a public holiday. However, some schools are closed on this day while others are open.

\*Some schools are closed on 1 May (Labour Day) while others are open.

## ESTONIA

### Organisation of school time in primary and general secondary education 2016/17 school year

	Primary education	General secondary education
<b>Starting date of students' school year</b>	1 September 2016	1 September 2016
<b>End of students' school year</b>	31 August 2017	31 August 2017
<b>Autumn holidays</b>	1 week 22-30 October 2016	1 week 22-30 October 2016
<b>Christmas/New Year</b>	2 weeks 23 December 2016 – 8 January 2017	2 weeks 23 December 2016 – 8 January 2017
<b>Spring/Easter</b>	1 week 18-26 March 2017	1 week 18-26 March 2017
<b>Summer</b>	12.5 weeks 7 June – 31 August 2017	12.5 weeks 7 June – 31 August 2017
<b>Public/religious holidays</b>	24 February 2017 (Independence Day) 14 April 2017 (Good Friday) 1 May 2017 (May Day)	24 February 2017 (Independence Day) 14 April 2017 (Good Friday) 1 May 2017 (May Day)
<b>Starting date of teachers' school year</b>	The beginning and the end of a teacher's school year depend on the individual school and teacher. According to the legislation, teachers have 56 days (8 weeks) of holidays. Generally, they take holidays in the middle of June and are back in the middle of August.	
<b>End of teachers' school year</b>		

Source: Eurydice.

#### Additional notes:

The Basic Schools and Upper Secondary Schools Act (§24) stipulates that an academic year shall start on 1 September and a study period shall include not less than 175 days of study (35 weeks).

School holidays (and accordingly the end of the school year) are determined by a regulation of the Minister of Education and Research for every school year. On the basis of a proposal of the head of the school and with the approval of the board of trustees, the owner of a school may establish school holidays different from those established by the Minister, taking into account that during the academic year there are four school holidays with a total duration of at least 12 weeks, whereby the summer holiday lasts at least eight consecutive weeks.

## FINLAND

<b>Organisation of school time in primary and general secondary education 2016/17 school year</b>		
	<b>Primary education</b>	<b>General secondary education</b>
<b>Starting date of students' school year</b>	Between 10 and 18 August 2016	Between 10 and 18 August 2016
<b>End of students' school year</b>	4 June 2017	4 June 2017
<b>Autumn holidays</b>	2-5 days in October 2016	2-5 days in October 2016
<b>Christmas/New Year</b>	1-2 weeks between 18 December 2016 and 7 January 2017	1-2 weeks between 18 December 2016 and 7 January 2017
<b>Winter/Carnival</b>	1 week between 22 February and 11 March 2017	1 week between 22 February and 11 March 2017
<b>Spring/Easter</b>	4 days between 14 and 17 April 2017	4 days between 14 and 17 April 2017
<b>Summer</b>	10-11 weeks between 4 June to mid-August 2017	10-11 weeks between 4 June to mid-August 2017
<b>Public/religious holidays</b>	6 January 2017 (Epiphany) 1 May 2017 5 May 2017 (Ascension day)	6 January 2017 (Epiphany) 1 May 2017 5 May 2017 (Ascension day)
<b>Starting date of teachers' school year <sup>(1)</sup></b>	Between 6 and 18 August 2016	Between 6 and 18 August 2016
<b>End of teachers' school year</b>	4 June 2017	4 June 2017

Source: Eurydice.

### Additional notes:

Independence day, Epiphany and 1 May are deducted from the total number of school days (190 days) if they are on any weekday other than Saturday. In the school year 2016/17, the number of school days will consequently be 187.

<sup>(1)</sup> There are no exact starting and ending dates of teachers' school year because their duties are regulated according to the collective agreement for teachers. In the agreement, the parties have agreed that the teachers have a calculatory holiday, which begins in mid-June and the length of holiday depends mainly on years in occupation. In practice, teachers' holidays coincide with students' holidays. However, teachers have their planning and INSET obligations, which they have to do both during and outside the school year. In general teachers start a school year a couple days before students.

## FORMER YUGOSLAV REPUBLIC OF MACEDONIA

<b>Organisation of school time in primary and general secondary education 2016/17 school year</b>		
	<b>Primary education</b>	<b>General secondary education</b>
<b>Starting date of students' school year</b>	1 September 2016	1 September 2016
<b>End of students' school year</b>	9 June 2017	9 June 2017
<b>Christmas / New Year</b>	31 December 2016 – 15 January 2017	31 December 2016 – 15 January 2017
<b>Spring / Easter</b>	14-17 April 2017	14-17 April 2017
<b>Third term</b>	12-19 June 2017: Additional classes for students with low attainment in primary schools 7-18 August 2017: Preliminary classes for students who will take remedial exams or exams for faster progress	12-26 June 2017: Additional classes for students with low attainment 7-11 August 2017: Preliminary classes for students who will take remedial exams or exams for faster progress
<b>Summer</b>	12 June – 31 August 2017	12 June – 31 August 2017
<b>Public holidays (national/religious/occasional)</b>	8 September 2016 11 October 2016 8 December 2016 14-17 April 2017 1 May 2017 24 May 2017	8 September 2016 11 October 2016 8 December 2016 14-17 April 2017 1 May 2017 24 May 2017
<b>Starting date of teachers' school year</b>	10 August 2016	10 August 2016
<b>End of teachers' school year</b>	7 July 2017	7 July 2017

Source: Eurydice.



## FRANCE

### Organisation of school time in primary and general secondary education 2016/17 school year

	Dates or periods
<b>Starting date of students' school year</b>	1 September 2016
<b>End of students' school year</b>	8 July 2017
<b>Autumn holidays</b>	2 weeks 19 October – 2 November 2016
<b>Christmas/New Year</b>	11 working days 17 December 2016 – 2 January 2017
<b>Winter/Carnival</b>	2 weeks 18 February – 5 March 2017 (zone A) 11-26 February 2017 (zone B) 4-19 February 2017(zone C)
<b>Spring/Easter</b>	2 weeks 15 April – 1 May 2017 (zone A) 8-23 April 2017 (zone B) 1-17 April 2017 (zone C)
<b>Summer</b>	8.5 weeks 8 July – 3 September 2017
<b>Public/religious holidays</b>	The following dates are regarded as public holidays by all institutions: 1 November 2016 (All Saints' Day) * 11 November 2016 (1918 Armistice Day) 25 December 2016 (Christmas) * 1 January 2017 (New Year) * 17 April 2017 (Easter Monday) 1 May 2017 (Labour Day) 8 May 2017 (end of WWII in Europe) 25 May 2017 (Ascension Day) 5 June 2017 (Whit Monday) 14 July 2017 (National holiday) * 15 August 2017 (Assumption Day) * * Days already included in 2016/17 school holidays
<b>Starting date of teachers' school year</b>	31 August 2016
<b>End of teachers' school year</b>	8 July 2017

Source: Eurydice.

#### Additional notes:

**Zone A:** Besançon, Bordeaux, Clermont-Ferrand, Dijon, Grenoble, Limoges, Lyon, Poitiers

**Zone B:** Aix-Marseille, Amiens, Caen, Lille, Nancy-Metz, Nantes, Nice, Orléans-Tours, Reims, Rennes, Rouen, Strasbourg

**Zone C:** Créteil, Montpellier, Paris, Toulouse, Versailles

## GERMANY

### Organisation of school time in primary and general secondary education 2016/17 school year

<b>Starting date of students' school year</b>	1 August 2016 begin of official school year <i>(for details see table I)</i>
<b>End of students' school year</b>	31 July 2017 end of official school year <i>(for details see table I)</i>
<b>Autumn holidays</b>	3 to 13 days staggered between 3 October and 4 November 2016 <i>(for details see table II)</i>
<b>Christmas/New Year</b>	11 to 18 days staggered between 19 December 2016 and 7 January 2017 <i>(for details see table II)</i>
<b>Winter/Carnival</b>	0 to 12 days staggered between 30 January and 4 March 2017 <i>(for details see table II)</i>
<b>Spring/Easter</b>	6 to 17 days staggered between 6 March and 22 April 2017 <i>(for details see table II)</i>
<b>Third term</b>	0 to 11 days staggered between 24 May and 16 June 2017 <i>(for details see table II)</i>
<b>Summer</b>	6 weeks staggered between 22 June and 11 September 2017 <i>(for details see table I)</i>
<b>Public/religious holidays</b>	Up to 10 days, depending on the <i>Land</i>
<b>Starting date of teachers' school year</b>	1 August 2016 (official date)
<b>End of teachers' school year</b>	31 July 2017 (official date)

Source: Eurydice

**TABLE I: Specification for starting/end of students' school year and summer holidays**

	<b>Beginning of students' school year 2016/17</b>	<b>End of students' school year 2016/17</b>	<b>Summer holidays 2017</b>
Hamburg	1 September 2016	19 July 2017	20 July – 30 August
Berlin	5 September 2016	19 July 2017	20 July – 1 September
Brandenburg	5 September 2016	19 July 2017	20 July – 1 September
Mecklenburg-Vorpommern / Schleswig-Holstein	5 September 2016	22 July 2017	24 July – 2 September
Bremen / Niedersachsen	4 August 2016	21 June 2017	22 June – 2 August
Rheinland-Pfalz / Hessen Saarland	29 August 2016	1 July 2017	3 July – 11 August 3 July – 14 August
Sachsen / Thüringen	8 August 2016/ 11 August 2016	23 June 2017	26 June – 4/9 August
Sachsen-Anhalt	11 August 2016	24 June 2017	26 June – 9 August
Nordrhein-Westfalen	24 August 2016	14 July 2017	17 July – 29 August
Baden-Württemberg	12 September 2016	26 July 2017	27 July – 9 September
Bayern	13 September 2016	28 July 2017	29 July – 11 September

## GERMANY (CONTINUED)

**TABLE II: Specification of shorter holiday periods**

Land	Autumn 2016	Christmas /New Year 2016/17	Winter 2017	Spring / Easter 2017	3 <sup>rd</sup> term 2017
Baden-Württemberg	2-4 November	23 Dec. – 7 Jan.	-	10-21 April	6-16 June
Bayern	31 Oct. -4 Nov.	24 Dec. – 5 Jan.	27 Febr. – 3 March	10-22 April	6-16 June
Berlin	17-28 October	23 Dec. – 3 Jan.	30 Jan. – 4 Febr.	10-18 April	24/26 May + 6-9 June
Brandenburg	17-28 October	23 Dec. – 3 Jan.	30 Jan. – 4 Febr.	12-22 April	-
Bremen	4-15 October	21 Dec. – 6 Jan.	30-31 January	10-22 April	6 June
Hamburg	17-28 October	27 Dec. – 6 Jan.	30 January	6-17 March	22-26 May
Hessen	17-29 October	22 Dec. – 7 Jan.	-	3-15 April	-
Mecklenburg-Vorpommern	24-28 October	22 Dec. – 2 Jan.	6-18 February	10-19 April	2-6 June
Niedersachsen	4-15 October	21 Dec. – 6 Jan.	30-31 January	10-22 April	26 May + 6 June
Nordrhein-Westfalen	10-21 October	23 Dec. - 6 Jan.	-	10-22 April	6 June
Rheinland-Pfalz	10-21 October	22 Dec. – 6 Jan.	-	10-21 April	-
Saarland	10-22 October	19-31 December	27 Febr. – 4 March	10-22 April	-
Sachsen	3-15 October	23 Dec. – 2 Jan.	13-24 February	13-22 April	26 May
Sachsen-Anhalt	4-15 October	19 Dec. – 2 Jan.	4-11 February	10-13 April	26 May
Schleswig-Holstein	17-29 October	23 Dec. – 6 Jan.	-	7-21 April	26 May
Thüringen	10-22 October	23-31 December	6-11 February	10-21 April	26 May

Source: Eurydice.

**Additional notes:**

In accordance with the *Hamburg Agreement* between the *Länder* on harmonisation in the school system, the school year begins on 1 August and ends on 31 July. The actual beginning and end depend on the dates of the summer holidays which vary from one year to the other.

# GREECE

## Organisation of school time in primary and general secondary education 2016/17 school year

	Primary education	General secondary education
<b>Starting date of students' school year</b>	12 September 2016 (however the official starting date is Sunday 11 September)	12 September 2016 (however the official starting date is Sunday 11 September)
<b>End of students' school year</b>	15 June 2017	The date in question, set after a Ministerial Decision (usually around 20 May), is subject to annual arrangement both for lower and upper secondary education. The beginning of the exam period is set within the second fortnight of May and the end of the exam period within the last week of June.
<b>Christmas/New Year</b>	2 weeks 24 December 2016 – 6 January 2017	2 weeks 24 December 2016 – 6 January 2017
<b>Spring/Easter</b>	2 weeks 10-21 April 2017	2 weeks 10-21 April 2017
<b>Summer</b>	Around 12 weeks 16 June – 9 September 2017	Around 10 weeks After the end of the exam period in June until 9 September 2017
<b>National/religious holidays</b>	28 October 2016 (National holiday) 17 November 2016 (National school celebration) 30 January 2017 (Religious school celebration) 27 February 2017 (Religious Holiday) 25 March 2017 (National holiday; however <b>Saturday</b> this year) 1 May 2017 (Labour Day) 5 June 2017 (Religious holiday) and some regional holidays	28 October 2016 (National holiday) 17 November 2016 (National school celebration) 30 January 2017 (Religious school celebration) 27 February 2017 (Religious Holiday) 25 March 2017 (National holiday; however <b>Saturday</b> this year) 1 May 2017 (Labour Day) 5 June 2017 (Religious holiday) and some regional holidays
<b>Starting date of teachers' school year</b>	1 September 2016	1 September 2016
<b>End of teachers' school year</b>	21 June 2017	30 June 2017

### Additional notes:

The official school year for both primary and secondary education lasts from 1 September 2016 until 31 August 2017.

At **primary** level, according to Presidential Decree 200/1998 (Government Gazette 161/issue A/13-7-1998) and Presidential Decree 201/1998 (Government Gazette 161/issue A/13-7-1998), the didactic year lasts from 1 September until 21 June of the following year.

At **secondary** level, according to Presidential Decree 123/1987, the didactic year lasts from 1 September until 30 June of the following year.

## HUNGARY

<b>Organisation of school time in primary and general secondary education 2016/17 school year</b>		
	<b>Primary and lower secondary education</b>	<b>General upper secondary education</b>
<b>Starting date of students' school year</b>	1 September 2016	1 September 2016
<b>End of students' school year</b>	15 June 2017	15 June 2017
<b>Autumn holidays</b>	2-4 November 2016	2-4 November 2016
<b>Christmas/New Year holidays</b>	22 December 2016 – 2 January 2017	22 December 2016 – 2 January 2017
<b>Spring/Easter holidays</b>	13-18 April 2017	13-18 April 2017
<b>Summer holidays</b>	11 weeks 16 June – 31 August 2017	11 weeks 16 June – 31 August 2017
<b>Public/religious holidays</b>	15 March 2017 (The Day of the Hungarian Revolution of 1848) 1 May 2017 (Labour Day) 5 June 2017 (Whit Monday)	15 March 2017 (The Day of the Hungarian Revolution of 1848) 1 May 2017 (Labour Day) 5 June 2017 (Whit Monday)
<b>Starting date of teachers' school year</b>	Institutional autonomy takes into account the concerning legal provision*.	Institutional autonomy takes into account the concerning legal provision*.
<b>End of teachers' school year</b>	Institutional autonomy takes into account the concerning legal provision*.	Institutional autonomy takes into account the concerning legal provision*.

Source: Eurydice.

### **Additional notes:**

According to the Act on Public Education, the minister responsible for education specifies the schedule of the school year in a ministerial decree. The Act stipulates that the school year starts on the first working day of September every year and finishes on the last working day prior to 16 June.

Thus schools have no autonomy in changing the first and last day of the school year but they have some autonomy in giving extra holidays before or after public holidays or school holidays for practical reasons (e.g. if a public holiday falls on a Thursday, the school may give Friday as holiday) if they provide teaching on a regular resting day (weekend) instead.

In addition to compulsory school days, schools also have five (in basic schools) or six (in upper-secondary schools) non-teaching days for educational purposes.

Holidays at schools providing minority education may differ from the above described school holidays to celebrate national traditions.

\* Act No. CXC of 2011 Public Education Act, Act No. XXXIII of 1992 on the legal status of public servants and the Government Decree No. 326/2013 stipulate that the holidays of teachers primarily have to be given during the summer holiday. If not all days can be taken during that, the rest has to be provided during the autumn, winter or spring holidays or teaching days. (For teachers the autumn, winter and spring holidays are regarded as workdays without teaching).

## ICELAND

<b>Organisation of school time in primary and general secondary education 2016/17 school year</b>		
	<b>Primary and lower secondary education</b>	<b>General upper secondary education</b>
<b>Starting date of students' school year</b>	Between 22 and 24 August 2016	Between 22 and 27 August 2016
<b>End of students' school year</b>	Between 6 and 9 June 2017	Between 23 and 27 May 2017
<b>Autumn holidays</b>	2-3 days in October 2016	2-3 days in October 2016
<b>Christmas/New Year</b>	2 weeks 21 December 2016 – 3 January 2017	2 weeks 21 December 2016 – 4 January 2017
<b>Winter/Carnival</b>	2-3 days in February 2017	2-3 days in February 2017
<b>Spring/Easter</b>	8 days 10-17 April 2017	8 days 10-17 April 2017
<b>Summer</b>	11 weeks Between 6-9 June and 21 August 2017	12 weeks Between 29 May and 23 August 2017
<b>Public/religious holidays</b>	20 April 2017 25 May 2017 5 June 2017	20 April 2017 25 May 2017 5 June 2017
<b>Starting date of teachers' school year</b>	Between 9 and 21 August 2016	Between 9 and 21 August 2016
<b>End of teachers' school year</b>	Between 5 and 11 June 2017	Between 5 and 11 June 2017

Source: Eurydice.

### **Additional notes:**

According to teachers wage contracts compulsory school teachers shall work in schools 5 days before the beginning of the school year and 4 days after the formal end of the school year. Upper secondary school teachers have a total of 4 working days before the beginning and/or the end of the school year. Total of school days for primary and lower secondary education are 180 per school year. For general upper secondary education, there should be 175 days in the period of 9 months plus 4 extra days outside regular 9 months period.

## IRELAND

<b>Organisation of school time in primary and general secondary education 2016/17 school year</b>		
	<b>Primary education</b>	<b>General secondary education</b>
<b>Starting date of students' school year</b>	First week of September 2016 <sup>(1)</sup>	Circa 29 August 2016
<b>End of students' school year</b>	End of June 2017 <sup>(2)</sup>	End of State Examinations in June 2017
<b>Autumn holidays</b>	1 week 31 October 2016 – 4 November 2016 (inclusive)	1 week 31 October 2016 – 4 November 2016 (inclusive)
<b>Christmas/New Year</b>	2 weeks 23 December 2016 – 6 January 2017 (inclusive)	2 weeks 23 December 2016 – 6 January 2017 (inclusive)
<b>Winter/Carnival</b>	2 days 23-24 February 2017 <sup>(3)</sup>	1 week 20-24 February 2017 (inclusive)
<b>Spring/Easter</b>	2 weeks 10-21 April 2017 (inclusive)	2 weeks 10-21 April 2017 (inclusive)
<b>Summer</b>	About 9 weeks End of June until week of 1 September 2017	About 12 weeks June, July and most of August 2017
<b>Public/religious holidays</b>	17 March 2017 1 May 2017 5 June 2017 and some religious holidays	17 March 2017 1 May 2017 5 June 2017 and some religious holidays
<b>Starting date of teachers' school year</b>	1 September 2016	1 September 2016
<b>End of teachers' school year</b>	31 August 2017	31 August 2017

Source: Eurydice.

### Additional notes:

#### Primary education

- <sup>(1)</sup> In order to meet the overall requirement of 183 days at primary level, the school year will normally commence in the week that 1 September falls. The exact date is determined locally at Board of Management level.
- <sup>(2)</sup> School may use their own discretion to determine the precise ending of the school year in June, providing it has met the overall requirement of 183 days.
- <sup>(3)</sup> Primary school may use 3 discretionary days to extend their Winter/Carnival break to an alternative option of a 5 day break.

Circular 0016/2014 sets out the standardised school breaks at primary and post-primary level for the school years 2014/15, 2015/16 and 2016/17.

## IRELAND (CONTINUED)

---

The arrangements for standardised closure at primary level (Circular 0016/2014) are agreed without prejudice to closure on specific days, within the overall requirement of 183 days at primary level, dictated by religious observance that is required in schools under patronage of different denominations or faiths. In the absence of an adequate number of discretionary days a school authority may choose to utilise a religious observation day for non-tuition purpose when planning the school year.

The existing arrangements for school breaks may provide some limited flexibility to schools on certain other days outside of the defined periods. The scheduling of such days must not be used to extend or modify the period set out above in respect of mid-term, Christmas and Easter breaks save where a school has been affected by extensive or prolonged school closures or religious observance requirements of a school under a particular patronage makes this necessary.

It was not a requirement of this agreement that the commencement or end of the school year either at primary or post primary level should be standardised.

### **General secondary**

In accordance with Circular M29/95, the minimum number of teaching days per post-primary school will be 167. In addition, in accordance with Circular 0016/2014, holiday periods during the school year have been standardised, i.e. midterm breaks, Christmas and Easter holidays. Traditionally, formal instruction ends in post-primary schools on the Friday preceding the June bank holiday weekend. State examinations normally commence the following Wednesday. In order for schools to meet their requirement to be open for 167 days during 2016/17 school year, it is expected that post-primary schools will be open circa the 29 August 2016.

The above holidays are standardised in accordance with Circular 0016/2014. The school year at post-primary level is very tight and does not allow for any additional holidays, as schools must comply with the minimum number of 167 days. In fact, in recent years, since the standardised school calendar, many schools which would have traditionally opened on the 1 September are now opening in late August in order to meet their full complement of days. There is more flexibility at primary school level, as they are not restricted by the end of year State exams.



## ITALY

<b>Organisation of school time in primary and general secondary education 2016/17 school year</b>		
	<b>Primary education</b>	<b>General secondary education</b>
<b>Starting date of students' school year</b>	Between 5 and 15 September 2016	Between 5 and 15 September 2016
<b>End of students' school year</b>	Between 7 and 16 June 2017	Between 7 and 16 June 2017
<b>Autumn holidays</b>	–	–
<b>Christmas/New Year</b>	15 to 17 days between 22-24 December 2016 and 8 January 2017	15 to 17 days between 22-24 December 2016 and 8 January 2017
<b>Winter/Carnival</b>	2-5 days in February	2-5 days in February
<b>Spring/Easter</b>	4 to 5 days between 13-14 April and 18 April 2017, depending on the regions	4 to 5 days between 13-14 April and 18 April 2017, depending on the regions
<b>Third term</b>	–	–
<b>Summer</b>	12-14 weeks between June and September 2017	12-14 weeks between June and September 2017
<b>Public/religious holidays</b>	1 November 2016 25 April 2017 1 May 2017 2 June 2017 (and Saints' days depending on the regions)	1 November 2016 25 April 2017 1 May 2017 2 June 2017 (and Saints' days depending on the regions)
<b>Starting date of teachers' school year</b>	1 September 2016	1 September 2016
<b>End of teachers' school year</b>	31 August 2017	31 August 2017

Source: Eurydice.

## ITALY (CONTINUED)

Specification of terms for the beginning and the end of the school year 2016/17		
Primary and general secondary education		
	Beginning 2016	End 2017
Abruzzo	12 September	7 June
Alto Adige (Bolzano)	5 September (5-day weeks) 5 September (6-day weeks)	16 June (5-day weeks) 16 June (6-day weeks)
Basilicata	14 September	10 June
Calabria	14 September	10 June
Campania	15 September	9 June
Emilia-Romagna	15 September	7 June
Friuli-Venezia Giulia	12 September	14 June
Lazio	15 September	8 June
Liguria	14 September	10 June
Lombardia	12 September	8 June
Marche	15 September	8 June
Molise	12 September	9 June
Piemonte	12 September	10 June
Puglia	15 September	10 June
Sardegna	14 September	10 June
Sicilia	14 September	9 June
Toscana	15 September	10 June
Trentino (Trento)	12 September	9 June
Umbria	12 September	10 June
Valle d'Aosta	12 September	10 June
Veneto	12 September	10 June

### Additional notes:

Schools can adjust the school calendar, established by the Regions, to the PTOF's requirements (the PTOF is the basic document of the cultural and planning identity of each school. It defines every three years the curricular, extra-curricular, educational and organisational projects of each school). Schools can organise in a flexible way the overall and single-subject timetable, provided that lessons spread over a minimum of five days per week and that the prescribed number of hours for the single subjects is complied with. The school year begins between the 2nd and the 4th week of September and finishes between the 1st and the 3rd week of June. The school adaptations of the school time should guarantee at least 200 days of lesson in the school year.

According to school autonomy, schools have up to 5 or 6 days available, which are foreseen for the suspension of educational activities.

# LATVIA

## Organisation of school time in primary and general secondary education 2016/17 school year

	Integrated primary and lower secondary education	General upper secondary education
<b>Starting date of students' school year</b>	1 September 2016	1 September 2016
<b>End of students' school year</b>	31 May 2017	31 May 2017
<b>Autumn holidays</b>	1 week 24-28 October 2016	1 week 24-28 October 2016
<b>Winter holidays (Christmas/New Year)</b>	2 weeks 22 December 2016 – 4 January 2017	2 weeks 22 December 2015 – 4 January 2017
<b>Spring/Easter</b>	1 week 13-17 March 2017	1 week 13-17 March 2017 20-24 March 2017 (for the 12th class)
<b>Summer</b>	13 weeks 1 June – 31 August 2017	13 weeks 1 June – 31 August 2017
<b>Public/religious holidays</b>	18 November 2016 (Proclamation of the Republic of Latvia) 14-17 April 2017 (Easter) 1 May 2017 (Convocation of the Constituent Assembly of the Republic of Latvia; Labour Day) 4 May 2017 (Restoration of Independence of the Republic of Latvia)	18 November 2016 (Proclamation of the Republic of Latvia) 14-17 April 2017 (Easter) 1 May 2017 (Convocation of the Constituent Assembly of the Republic of Latvia; Labour Day) 4 May 2017 (Restoration of Independence of the Republic of Latvia)
<b>Starting date of teachers' school year</b>	See Additional notes	See Additional notes
<b>End of teachers' school year</b>	See Additional notes	See Additional notes

Source: Eurydice.

### Additional notes:

Single structure compulsory education (integrated primary and lower-secondary education (*pamatizglītība*)): end of the school year for the 9th class: 9 June 2017.

Upper secondary education: end of the school year for the 12th class: 16 June 2017.

The school year is divided in two semesters: the first from 1 September to 21 December 2016 and the second from 5 January to 31 May 2017 (or to 9 June for the 9th class and 16 June for the 12th class).

Education institutions decide when to carry out an additional 1 week long holidays in the second semester for the 1st class.

Education institutions decide when to carry out a 1 week long project week in the second semester.

Extension of the school year for classes 1-8 and 10-11 may be made if specific circumstances hindering education process arise during the school year (e.g. extreme temperature, strike, emergency situation in school, etc.).

**Holidays (summer 2016):** These are the dates for the official summer holiday period for classes 1-8 and 10-11.

**Public holidays:** When the specific holidays of 18 November (Proclamation of the Republic of Latvia) and 4 May (Restoration of Independence of the Republic of Latvia) fall on Saturday or Sunday, the holiday is transferred to the next working day.

**Teachers:** The teachers' school year concurs fully with students' year, but normally is longer and starts earlier, though the end and the start date is not defined officially. Teachers have the right to receive 8 weeks of paid annual leave in summer.

## LIECHTENSTEIN

<b>Organisation of school time in primary and general secondary education 2016/17 school year</b>	
	<b>Primary education and general secondary education</b>
<b>Starting date of students' school year</b>	17 August 2016
<b>End of students' school year</b>	7 July 2017
<b>Autumn holidays</b>	2 weeks 1-16 October 2016
<b>Christmas/New Year</b>	2 weeks 24 December 2016 – 8 January 2017
<b>Winter/Carnival</b>	1 week 25 February – 5 March 2017
<b>Spring/Easter</b>	2.5 weeks 13-30 April 2017
<b>Summer</b>	6 weeks 8 July – 16 August 2017
<b>Public/religious holidays</b>	8 September 2016 – Birth of the Blessed Virgin Marie ( <i>Mariä Geburt</i> ) 1 November 2016 – All Saints Day ( <i>Allerheiligen</i> ) 8 December 2016 – Feast of the Immaculate Conception ( <i>Mariä Empfängnis</i> ) 2/3 February 2017 – Candlemas ( <i>Maria Lichtmess</i> ) 19 March 2017 – St. Josephs Day ( <i>Josefitag</i> ) 16/17 March 2017 – Easter Monday ( <i>Ostern/Ostermontag</i> ) 1 May 2017 – Labour Day ( <i>Tag der Arbeit</i> ) 25/26 May 2017 – Ascension Day ( <i>Auffahrt</i> ) 4/5 June 2017 – Whitsuntide/Whit Monday ( <i>Pfingsten/Pfingsmontag</i> ) 15/16 June 2017 – Corpus Christi ( <i>Fronleichnam</i> )
<b>Starting date of teachers' school year</b>	17 August 2016
<b>End of teachers' school year</b>	1 July 2017

Source: Office of Education Liechtenstein.

Nation School Calender: <http://www.llv.li/files/sa/kalender2015-web.pdf>

# LITHUANIA

Organisation of school time in primary and general secondary education 2016/17 school year		
	Primary education	General secondary education
<b>Starting date of students' school year</b>	1 September 2016	1 September 2016
<b>End of students' school year</b>	30 May 2017	2 June 2017*
<b>Autumn holidays</b>	1 week 31 October 2016 – 4 November 2016	1 week 31 October 2016 – 4 November 2016
<b>Christmas/New Year</b>	2 weeks 27 December 2016 – 6 January 2017	2 weeks 27 December 2016 – 6 January 2017
<b>Winter/Carnival</b>	17 February 2017	17 February 2017**
<b>Spring/Easter</b>	1 week 10-14 April 2017	1 week 10-14 April 2017
<b>Summer</b>	13 weeks 31 May – 31 August 2017	12,5 weeks 5 June – 31 August 2017***
<b>Public/religious holidays</b>	1 November 2016 16 February 2017 11 March 2017 1 May 2017	1 November 2016 16 February 2017 11 March 2017 1 May 2017
<b>Starting date of teachers' school year</b>	Following the general teaching plans and subject to the agreement of the school head and teacher	Following the general teaching plans and subject to the agreement of the school head and teacher
<b>End of teachers' school year</b>	Following the general teaching plans and subject to the agreement of the school head and teacher****	Following the general teaching plans and subject to the agreement of the school head and teacher****

Source: General Curriculum Framework for Primary and Secondary Education.

## Additional notes:

\* The end of students' school year in grade 5 (first year of lower secondary education) is on 30 May 2017 and in grade 12 (last year of upper secondary education) is on 25 May 2017.

\*\* Additional 10 days holidays are allocated to pupils of grades 1 to 5. It is required that the school agreed additional holidays with parents and school council. At national level, it is recommended that additional holidays would coincide with 6-12 grades winter holidays.

\*\*\* Summer holidays for students in grade 5 start on 31 March 2017 and in grade 12 on 26 May 2017.

\*\*\*\* The annual amount of leave for **teachers** is legislated as 56 calendar days. Normally, it is recommended that teachers take their annual leave during school summer holidays (i.e. teachers' leave is normally determined by the school calendar).

## LUXEMBOURG

<b>Organisation of school time in primary and general secondary education 2016/17 school year</b>		
	<b>Primary education</b>	<b>General secondary education</b>
<b>Starting date of students' school year</b>	15 September 2016	15 September 2016
<b>End of students' school year</b>	15 July 2017	15 July 2017
<b>Autumn holidays</b>	1 week 29 October – 6 November 2016	1 week 29 October – 6 November 2016
<b>Christmas/New Year</b>	2 weeks 24 December 2016 – 8 January 2017	2 weeks 24 December 2016 – 8 January 2017
<b>Winter/Carnival</b>	1 week 18-26 February 2017	1 week 18-26 February 2017
<b>Spring/Easter</b>	2 weeks 8-23 April 2017	2 weeks 8-23 April 2017
<b>Third term</b>	1 week 3-11 June 2017	1 week 3-11 June 2017
<b>Summer</b>	8 weeks 16 July – 14 September 2017	8 weeks 16 July – 14 September 2017
<b>Public/religious holidays</b>	1 November 2016 (All Saints' Day) 1 May 2017 (Labour Day) 25 May 2017 (Ascension Day) 5 June 2017 (Whit Monday) 23 June 2017 (National Holiday)	1 November 2016 (All Saints' Day) 1 May 2017 (Labour Day) 25 May 2017 (Ascension Day) 5 June 2017 (Whit Monday) 23 June 2017 (National Holiday)
<b>Starting date of teachers' school year</b>	15 September 2016	15 September 2016
<b>End of teachers' school year</b>	15 July 2017	15 July 2017

Source: Eurydice.

## MALTA

<b>Organisation of school time in primary and general secondary education 2016/2017 school year</b>		
	<b>Primary education</b>	<b>General secondary education</b>
<b>Starting date of students' school year</b>	26 September 2016	26 September 2016
<b>End of students' school year</b>	28 June 2016	28 June 2016
<b>Autumn holidays</b>	1-3 November 2016	1-3 November 2016
<b>Christmas / New Year</b>	23 December 2016 – 6 January 2017	23 December 2016 – 6 January 2017
<b>Winter / Carnival</b>	27-28 February 2017	27-28 February 2017
<b>Spring / Easter</b>	12-19 April 2017	12-19 April 2017
<b>Third term</b>	20 April – 28 June 2017	20 April – 28 June 2017
<b>Summer</b>	29 June – 24 September 2017	29 June – 24 September 2017
<b>Public / religious holidays</b>	8 December 2016 13 December 2016 10 February 2017 31 March 2017 1 May 2017 7 June 2017 29 June 2017	8 December 2016 13 December 2016 10 February 2017 31 March 2017 1 May 2017 7 June 2017 29 June 2017
<b>Starting date of teachers' school year</b>	22 September 2016	22 September 2016
<b>End of teachers' school year</b>	6 July 2017	6 July 2017

### **Additional notes:**

Half-yearly examinations take place between 20 and 23 February 2017 for pupils in the last three years of primary school and between 9 and 23 February 2017 for secondary school students.

The Annual Examinations take place between 26 and 28 June 2017 for primary school pupils and between 12 and 28 June 2017 for secondary school students.

Students of Year 6 in primary schools sit for End-of-Primary Benchmark Assessments held on 26 and 29 May 2017 (oral components) and 30, 31 May and 1 and 2 June 2017 (for the written components).

Teachers are required to attend in-service training (INSET) for three days either prior to the beginning of the school year or immediately at the end of the school year. This training is held on 16, 19 and 20 September 2016 and on 7, 10 and 11 July 2017.

Teachers who attend INSET courses in September 2016 start their school year on 16 September 2016. Teachers who attend INSET courses in July 2017 end their school year on 11 July 2017.

During the month of June schools are on half-days.

Total number of school days in the primary and general secondary education is 170 days and total number of holidays is 28 days.

## MONTENEGRO

<b>Organisation of school time in primary and general secondary education 2016/17</b>		
	<b>Primary education</b>	<b>General secondary education</b>
<b>Starting date of students' school year</b>	1 September 2016	1 September 2016
<b>End of students' school year</b>	13 June 2017 19 May 2017 (in the final year)	13 June 2017 19 May 2017 (in the final year)
<b>Christmas/New Year/Winter</b>	25-27 December 2016 1-3 January 2017 7-9 January 2017	25-27 December 2016 1-3 January 2017 7-9 January 2017
<b>Winter/Carnival</b>	3-23 January 2017	3-23 January 2017
<b>Summer</b>	13 June – 31 August 2017	13 June – 31 August 2017 Note: for the students in vocational education who have professional internship (10-15 days), the summer vacation begins after the end of the internship.
<b>Public holidays (national/religious/occasional)</b>	25-27 December 2016 (Catholic Christmas) 1-3 January 2017 (New Year's Day) 7-9 January 2017 (Orthodox Christmas) 16 April 2017 Easter Day (Catholic) 16 April 2017 Easter Day (Orthodox) 1 May 2017 (International Labour Day) 21 May 2017 (Independence Day) 13 July 2017 (Statehood Day)	25-27 December 2016 (Catholic Christmas) 1-3 January 2017 (New Year's Day) 7-9 January 2017 (Orthodox Christmas) 16 April 2017 Easter Day (Catholic) 16 April 2017 Easter Day (Orthodox) 1 May 2017 (International Labour Day) 21 May 2017 (Independence Day) 13 July 2017 (Statehood Day)
<b>Starting date of teachers' school year</b>	10 August 2016	10 August 2016
<b>End of teachers' school year</b>	7 July 2017	7 July 2017

Source: Eurydice.



# THE NETHERLANDS

## Organisation of school time in primary and general secondary education 2016/2017 school year

	Primary education	General secondary education
<b>Starting date of students' school year</b>	Northern region: 29 August 2016 Central region: 22 August 2016 Southern region: 5 September 2016	Northern region: 29 August 2016 Central region: 22 August 2016 Southern region: 5 September 2016
<b>End of students' school year</b>	Northern region: 21 July 2017 Central region: 7 July 2017 Southern region: 14 July 2017	Northern region: 21 July 2017 Central region: 7 July 2017 Southern region: 14 July 2017
<b>Autumn holidays</b>	Northern region: 15 to 23 October 2016 Central region: 15 to 23 October 2016 Southern region: 22 to 30 October 2016	Northern region: 15 to 23 October 2016 Central region: 15 to 23 October 2016 Southern region: 22 to 30 October 2016
<b>Christmas/New Year holidays</b>	24 December 2016 to 8 January 2017	24 December 2016 to 8 January 2017
<b>Winter/Carnival</b> (Spring Holiday or Crocus Holiday)	Northern region: 18 to 26 February 2017 Central region: 25 February to 5 March 2017 Southern region: 25 February to 5 March 2017	Northern region: 18 to 26 February 2017 Central region: 25 February to 5 March 2017 Southern region: 25 February to 5 March 2017
<b>Spring/Easter</b> (May Holiday)	22-30 April 2017	22-30 April 2017
<b>Summer</b>	Northern region: 22 July to 3 September 2017 Central region: 8 July to 20 August 2017 Southern region: 15 July to 27 August 2017	Northern region: 22 July to 3 September 2017 Central region: 8 July to 20 August 2017 Southern region: 15 July to 27 August 2017
<b>Public holidays</b> (national/religious/occasional)	17 April 2017 (Easter Monday) 27 April 2017 (King's Birthday) 5 May 2017 (Liberation day) 25 May 2017 (Ascension Day) 5 June 2017 (Whit Monday)	17 April 2017 (Easter Monday) 27 April 2017 (King's Birthday) 5 May 2017 (Liberation day) 25 May 2017 (Ascension Day) 5 June 2017 (Whit Monday)
<b>Starting date of teachers' school year</b>	See additional notes	See additional notes
<b>End of teachers' school year</b>	See additional notes	See additional notes

## The Netherlands (continued)

---

### **Additional notes:**

The school year officially runs from 1 August to 31 July of the following year. The start and end of the school year of the individual schools is according to the region (Northern, Central and Southern region).

Dates for the **summer holidays** are decided by the Ministry of Education, Culture and Science; the holiday period is staggered over 3 regions (compulsory dates for all schools); also dates for Christmas holidays and May holidays (one week) are decided by the Ministry; other holidays are recommended by the Ministry.

A balanced distribution of teaching time is important in the Netherlands. Schools have the opportunity to deviate from the recommended data, but they have to take into account the wishes and expectations of the parents/caregivers. The Primary Education Act requires schools to provide at least 7 520 teaching hours over the eight years that children attend school.

- \*) In the Netherlands Carnival holiday is called Spring Holiday or Crocus Holiday
- If the recommended period for the Spring Holiday does not fit with Carnival week; it can be expected that schools, especially in the Southern areas of the Netherlands, will not follow the recommendations and will close for Carnival.

The **teachers'** school year is similar to the students' school year. However, it is at the school's discretion to decide whether teachers are expected to end or start later (in order to attend meetings, for preparation of timetable, other non-teaching activities etc.)

### **Holidays 2016/2017:**

Primary education: The Ministry of Education sets the data for the summer holidays, the Christmas holidays and one week of the May holiday. The dates of the autumn and spring holidays are decided by the competent authority of the school (school board), although the Ministry does publish advisory dates.

Secondary education: Per school year there is a maximum of up to 71 free days of school: 55 holidays, 4 public holidays and 12 rostered days off.

So there is also a lot of autonomy for schools.

## NORWAY

<b>Organisation of school time in primary and general secondary education 2016/17 school year</b>		
	<b>Primary education</b> See additional note 1	<b>General secondary education</b> See additional note 1
<b>Starting date of students' school year</b>	Between 17 and 22 August 2016	Between 17 and 22 August 2016
<b>End of students' school year</b>	Between 19 and 23 June 2017	Between 19 and 23 June 2017
<b>Autumn holidays</b>	1 week (some only 2-3 days) between 3-14 October 2016 (week 40 or 41)	1 week (some only 2-3 days) between 3-14 October 2016 (week 40 or 41)
<b>Christmas/New Year</b>	Around 2 weeks from 19-23 December 2016 until 2-6 January 2016	Around 2 weeks from 19-23 December 2016 until 2-6 January 2016
<b>Winter/Carnival</b>	1 week between 13-24 February 2017 (Week 7 or 8)	1 week between 13-24 February 2017 (Week 7 or 8)
<b>Spring/Easter</b>	10-17 April 2017	10-17 April 2017
<b>Third term</b>	–	–
<b>Summer</b>	Around 8 weeks Starts between 19-23 June until 17-22 August 2017	Around 8 weeks Starts between 19-23 June until 17-22 August 2017
<b>Public/religious holidays</b>	1 May 2017 (Labour Day) 17 May 2017 (National Day) 25 May 2017 (Ascension Day) 5 June 2017 (Whit Monday)	1 May 2017 (Labour Day) 17 May 2017 (National Day) 25 May 2017 (Ascension Day) 5 June 2017 (Whit Monday)
<b>Starting date of teachers' school year</b>	See Additional note 2.	See Additional note 2.
<b>End of teachers' school year</b>	See Additional note 2.	See Additional note 2.

Source: <http://www.ks.no/globalassets/blokker-til-hvert-fagomrade/arbeidsgiver/tariff-lov--og-avtaleverk/b-rundskriv-9-2014---undervisningspersonalet---arbeidstid-og-diverse-bestemmelser.pdf> and <http://www.timeanddate.no/kalender/skolerute2016-2017>

### Additional notes:

**Note 1:** According to The Education Act § 2.2 (primary and lower secondary schools) and 2.3 (upper secondary schools): The municipality/county issues regulations concerning school days and holidays for the pupils during the school year. These regulations shall be adapted to national tests and examinations.

The time allocated to teaching in school shall not be less than 38 school weeks within a framework of 45 consecutive weeks during the school year.

**Note 2:** The teachers' working hours are 1 300 hours for primary education (ISCED 1), 1 225 hours for lower secondary education (ISCED 2) and 1 150 hours for upper secondary education (ISCED 3). The teachers must work minimum 6 days more than the pupil's school year, for planning, evaluation, competence development, cooperation with colleagues, e.g.

Teacher working time is negotiated between teacher organisations and the organisation of local government (KS.no) and is described in a common agreement <http://www.ks.no/globalassets/blokker-til-hvert-fagomrade/arbeidsgiver/tariff-lov--og-avtaleverk/b-rundskriv-9-2014---undervisningspersonalet---arbeidstid-og-diverse-bestemmelser.pdf>

# POLAND

## Organisation of school time in primary and general secondary education 2016/17 school year

	Primary education	General secondary education
<b>Starting date of students' school year</b>	1 September 2016	1 September 2016
<b>End of students' school year</b>	30 June 2017	30 June 2017
<b>Autumn holidays</b>	–	–
<b>Christmas/New Year</b>	23-31 December 2016	23-31 December 2016
<b>Winter</b>	2 weeks as specified for the following regions: <b>16-29 January 2017</b> Lubelskie Łódzkie Podkarpackie Pomorskie Śląskie <b>23 January – 5 February 2017</b> Podlaskie Warmińsko-Mazurskie <b>30 January – 12 February 2017</b> Kujawsko-Pomorskie Lubuskie Małopolskie Świętokrzyskie Wielkopolskie <b>13-26 February 2017</b> Dolnośląskie Mazowieckie Opolskie Zachodniopomorskie	2 weeks as specified for the following regions: <b>16-29 January 2017</b> Lubelskie Łódzkie Podkarpackie Pomorskie Śląskie <b>23 January – 5 February 2017</b> Podlaskie Warmińsko-Mazurskie <b>30 January – 12 February 2017</b> Kujawsko-Pomorskie Lubuskie Małopolskie Świętokrzyskie Wielkopolskie <b>13-26 February 2017</b> Dolnośląskie Mazowieckie Opolskie Zachodniopomorskie
<b>Spring/ Easter</b>	13-18 April 2017	13-18 April 2017
<b>Third term</b>	–	–
<b>Summer</b>	1 July – 3 September 2017	1 July – 3 September 2017
<b>Public/religious holidays</b>	1, 11 November 2016 6 January 2017 1, 3 May 2017 15 June 2017	1, 11 November 2016 6 January 2017 1, 3 May 2017 15 June 2017
<b>Starting date of teachers' school year</b>	1 September 2016	1 September 2016
<b>End of teachers' school year</b>	30 June 2017	30 June 2017

Source: Eurydice.

### Additional notes:

In addition, the school head has the possibility to determine some extra days off that may be devoted to external tests and exams and/or religious festivals not being registered as official public holidays.

## PORTUGAL

<b>Organisation of school time in primary and general secondary education 2016/17 school year</b>		
	<b>Primary education</b>	<b>General secondary education</b>
<b>Starting date of students' school year</b>	Between 9 and 15 September 2016	Between 9 and 15 September 2016
<b>End of students' school year*</b>	16 June 2017 – grades 5 and 6 23 June 2017 – grades 1 to 4	6 June 2017 – grades 9, 11 and 12 16 June 2017 – grades 7, 8 and 10
<b>First term</b>	9/15 September – 16 December 2016	9/15 September – 16 December 2016
<b>Christmas/New Year</b>	19 December 2016 – 2 January 2017	19 December 2016 – 2 January 2017
<b>Second term</b>	3 January – 4 April 2017	3 January – 4 April 2017
<b>Winter/Carnival</b>	27 February – 1 March 2017	27 February – 1 March 2017
<b>Spring/Easter</b>	5-18 April 2017	5-18 April 2017
<b>Third term*</b>	19 April 16 June 2017 – grades 5 and 6 23 June 2017 – grades 1 to 4	19 April 6 June 2017 – grades 9, 11 and 12 16 June 2017 – grades 7, 8 and 10
<b>Summer*</b>	About 11-12 weeks from 16 or 23 June until mid-September 2017	About 12-13 weeks from 6 or 16 June until mid-September 2017
<b>Public/religious holidays</b>	5 October 2016 1 November 2016 1 December 2016 8 December 2016 25 April 2017 1 May 2017 10 June 2017 15 June 2017 (plus holidays at municipal level)	5 October 2016 1 November 2016 1 December 2016 8 December 2016 25 April 2017 1 May 2017 10 June 2017 15 June 2017 (plus holidays at municipal level)
<b>Starting date of teachers' school year**</b>	See Additional notes.	See Additional notes.
<b>End of teachers' school year**</b>	See Additional notes.	See Additional notes.

Source: Eurydice.

### Additional notes:

The total number of instruction days varies between 175 and 180 days.

\* National exams occur until the end of July.

\*\* The official teachers' school year lasts from 1 September to 31 August. Teachers have the right to take summer holidays between the end of pupils' school year and the beginning of the following school year.

## ROMANIA

### Organisation of school time in primary and general secondary education 2016/17 school year

	Primary education	General secondary education
<b>Starting date of students' school year</b>	12 September 2016	12 September 2016
<b>End of students' school year</b>	16 June 2017	16 June 2017
<b>Autumn holidays</b>	29 October – 6 November 2016	–
<b>Christmas/New Year</b>	24 December 2016 – 8 January 2017	24 December 2016 – 8 January 2017
<b>Winter/Carnival</b>	4-12 February 2017	4-12 February 2017
<b>Spring/Easter</b>	19-30 April 2017	19-30 April 2017
<b>Summer</b>	17 June – 10 September 2017	17 June – 10 September 2017
<b>Public/religious holidays</b>	30 November 2016 1 December 2016 17 April 2017 1 May 2017 5 June 2017	30 November 2016 1 December 2016 17 April 2017 1 May 2017 5 June 2017
<b>Starting date of teachers' school year</b>	1 September 2016	1 September 2016
<b>End of teachers' school year</b>	31 August 2017	31 August 2017

Source: Eurydice.

#### Additional notes:

1. The schools and the School Inspectorates will mark with specific events the following days:

- 5 October 2016 = World Teachers' Day
- 5 June 2017 = Primary Teacher's Day
- 1 June 2017 = International Children's Day

2. One week (5 consecutive working days) is dedicated to extracurricular and extra-school activities, within the National Programme *Other kind of school: Know more, Be better!* [*Școala altfel: Să știi mai multe, să fii mai bun!*], with a specific timetable.

3. In exceptional situations, depending on the local climatic conditions and school's specificity, the organisation of the school year can be modified at the request of schools, approved by the regional education authorities (County School Inspectorate). Approval is given if the number of 169 school days (35 weeks) is maintained and all pupils may participate without restrictions in national examinations.

## SERBIA

<b>Organisation of school time in primary and general secondary education 2016/17 school year</b>		
	<b>Primary and lower secondary education (<i>Primary school</i>)</b>	<b>Upper secondary education (<i>Secondary school</i>)</b>
<b>Starting date of students' school year</b>	1 September 2016	
<b>End of students' school year</b>	Final (8th) grade: 30 May 2017 Other grades: 13 June 2017	Final (4th) grade in grammar schools: 23 May 2017 Final (3rd or 4th) grade in vocational secondary schools: 30 May 2017 Other grades: 20 June 2017
<b>Autumn holidays</b>	–	
<b>Christmas/New Year</b>	31 December 2016 – 6 January 2017	
<b>Winter/Carnival</b>	30 January – 10 February 2017	
<b>Spring/Easter</b>	13-17 April 2017	
<b>Summer</b>	14 June – 31 August 2017	21 June – 31 August 2017
<b>Public/religious holidays</b>	21 October 2016 – public (working) holiday 11 November 2016 – national holiday 7 January 2017 – religious holiday (falls on Saturday) 27 January 2017 – religious (working) holiday 15-16 February 2017 – national holiday 13-17 April 2017 – religious holiday 1-2 May 2017 – national holiday 22 April 2017 – public (working) holiday (falls on Saturday) 9 May 2017 – public (working) holiday 28 June 2017 – public (working) holiday	
<b>Starting date of teachers' school year</b>	Exact starting date of teachers' school year is determined at institutional (school) level. As required at central level, teachers have vacation days as any other employees (minimum is 20 days per year for teachers entering the profession), which they have to use during the school holidays. Teachers usually start the school year a couple of weeks before students (mid-August).	
<b>End of teachers' school year</b>	Exact end date of teachers' school year is determined at institutional (school) level. As required at central level, teachers have vacation days as any other employees (minimum is 20 days per year for teachers entering the profession), which they have to use during the school holidays. Teachers usually end the school year several weeks after students (mid-July).	

Source: Eurydice.

## SERBIA (CONTINUED)

---

**Additional notes:**

The Ministry of Education, Science and Technological Development of the Republic of Serbia issues the school calendar for primary and secondary education each year for the forthcoming school year.

Final grade students in both primary and secondary education finish the school year earlier in order to prepare for final and entrance exams.

In primary education, the school calendar for 2016/17 school year for grades 1st to 7th have the total of 36 working weeks (180 school working days). School calendar for the 8th (final) grade is comprised of 34 working weeks (170 school working days).

In general secondary education, there are 37 working weeks (185 school working days) in grades 1st to 3rd, and 33 working weeks (165 school working days) in the final (4th) grade. In vocational secondary education, the calendar for all grades except the final is comprised of 37 working weeks (185 school working days), while the final grade's calendar (3rd or 4th) consists of 34 working weeks (170 school working days).

Holidays can be national (which are always non-working), public and religious (working or non-working). All in all, according to the school calendar, there are 10 holidays. In addition, both students and education staff who belong to different religious communities are allowed to be absent from school during religious holidays specific for their community (first day of Slava for Orthodox Christians, first day of Kurban Bayram for Muslims, first day of Yom Kippur for Jews).



## SLOVAKIA

<b>Organisation of school time in primary and general secondary education 2016/17 school year</b>		
	<b>Primary education</b>	<b>General secondary education</b>
<b>Starting date of students' school year</b>	5 September 2016	5 September 2016
<b>End of students' school year</b>	30 June 2017	30 June 2017
<b>Autumn holidays</b>	2 days 28-31 October 2016	2 days 28-31 October 2016
<b>Christmas/New Year</b>	2 weeks 23 December 2016 – 5 January 2017	2 weeks 23 December 2016 – 5 January 2017
<b>Winter/Carnival</b>	1 week according to regions: 20-24 February 2017 Bratislava, Nitra, Trnava 27 February – 3 March 2017 Banska Bystrica, Žilina, Trenčín 6-10 March 2017 Košice, Prešov	1 week according to regions: 20-24 February 2017 Bratislava, Nitre, Trnava 27 February –3 March 2017 Banska Bystrica, Žilina, Trenčín 6-10 March 2017 Košice, Prešov
<b>Spring/Easter</b>	4 days (Easter holidays) 13-18 April 2017	4 days (Easter holidays) 13-18 April 2017
<b>Summer</b>	9 weeks 3 July – 31 August 2017	9 weeks 3 July – 31 August 2017
<b>Public/religious holidays</b>	1 September 2016 15 September 2016 1 November 2016 17 November 2016 3 February 2017	1 September 2016 15 September 2016 1 November 2016 17 November 2016 3 February 2017
<b>Starting date of teachers' school year</b>	Usually one week before the beginning of the school year	Usually one week before the beginning of the school year
<b>End of teachers' school year</b>	Usually, one week after summer holidays begin	Usually, one week after summer holidays begin

Source: Eurydice.

### Additional notes:

Official school year lasts from 1 September to 31 August. If 2 September falls on a Friday, Saturday or Sunday starting date of school year is next Monday.

According to the Labour Code, teachers and school heads at primary and secondary levels have 8 weeks of holidays per calendar year. They take it during the holidays. Usually, teachers work one week after beginning of summer holidays and one week before the beginning of the school year.

## SLOVENIA

### Organisation of school time in single structure education and general upper secondary education 2016/17 school year

	Single structure education	General upper secondary education
<b>Starting date of students' school year</b>	1 September 2016	1 September 2016
<b>End of students' school year</b>	23 June 2017 15 June 2017 (final grade)	23 June 2017 22 May 2017 (final grade)
<b>Autumn holidays</b>	1 week 31 October – 4 November 2016	1 week 31 October – 4 November 2016
<b>Christmas/New Year</b>	1 week 25 December 2016 – 1 January 2017	1 week 25 December 2016 – 1 January 2017
<b>Winter/Carnival</b>	1 week 20-26 February 2017 (Eastern region) 27 February – 5 March 2017 (Western region)	1 week 20-26 February 2017 (Eastern region) 27 February – 5 March 2017 (Western region)
<b>Spring holidays</b>	1 week 27 April – 2 May 2017	1 week 27 April – 2 May 2017
<b>Summer holidays</b>	10 weeks 26 June – 31 August 2017	10 weeks 26 June – 31 August 2017
<b>Public/religious holidays</b>	17 April 2017 (Easter Monday)	17 April 2017 (Easter Monday)
<b>Starting date of teachers' school year</b>	10-15 days before students start school	10-15 days before students start school
<b>End of teachers' school year</b>	Beginning to mid-July 2017	Beginning to mid-July 2017

Source: Eurydice.

#### Additional notes:

Slovenia has a single structure compulsory school of nine years.

For pupils and upper-secondary students, the school year officially begins on 1 September and ends on 31 August, however, the lessons end in June.

For teachers, the school year begins 10 to 15 days before the students start school, i.e. mid-August and ends in the beginning or mid-July. The exact duration depends on the days of annual leave allocated to an individual (22 to 35 days) and tasks and obligations appointed by the school head.

## SPAIN

<b>Organisation of school time in primary and general secondary education 2016/17 school year <sup>(1, 2)</sup></b>		
	<b>Primary education</b>	<b>General secondary education</b>
<b>Starting date of students' school year</b>	Between 5 and 13 September 2016	Between 7 and 19 September 2016
<b>End of students' school year</b>	Between 20 and 27 June 2017	Between 16 and 28 June <sup>(3)</sup> 2017
<b>Christmas/New Year</b>	At least 2 weeks between 22 December 2016 and 8 January 2017	At least 2 weeks between 22 December 2016 and 8 January 2017
<b>Winter/Carnival</b>	Between 2 and 3 days (depending on the Autonomous Community) <sup>(4)</sup>	Between 2 and 3 days (depending on the Autonomous Community) <sup>(4)</sup>
<b>Spring/Easter</b>	About 10 days in the period between the second week and the fourth week of April 2017	About 10 days in the period between the second week and the fourth week of April 2017
<b>Summer</b>	12 weeks between late June and mid-September	12 weeks between late June and mid-September
<b>Public/religious holidays</b>	12 public holidays (some common throughout the country and some specific of the different Autonomous Communities).	12 public holidays (some common throughout the country and some specific of the different Autonomous Communities).
<b>Starting date of teachers' school year</b>	1 September 2016	1 September 2016
<b>End of teachers' school year</b>	30 June 2017	30 June 2017 <sup>(5)</sup>

### Additional notes:

<sup>(1)</sup> Dates vary according to the different Autonomous Communities, see the table below.

**Total number:** <sup>(2)</sup> The total minimum number of school days is 175 in primary, lower and upper secondary education in all Autonomous Communities, although there are some additional days in several Communities.

<sup>(3)</sup> In the last year of post-compulsory upper general secondary education, classes finish two, three or four weeks earlier than in other stages. This time is meant for preparing entrance examinations to universities and final evaluation of *Bachillerato*, among others.

**Total number:** <sup>(4)</sup> In the different Autonomous Communities, the education authorities allocate a certain number of days (between 3 and 6) for Carnival, bank holidays or other free days or grant freedom to schools to allocate these days along the whole school year at their convenience.

<sup>(5)</sup> The management team of schools must stay in the school until 31 July.

## SPAIN (CONTINUED)

### Specification of terms for the starting and the end of students' school year 2016/17 in the different Autonomous Communities

	Primary education		General secondary education <sup>(1)</sup>	
	Beginning (2016)	End (2017)	Beginning (2016)	End (2017)
Andalucía	12 September	22 June	15 September	22 June
Aragón	8 September	21 June	12 September <sup>(2)</sup>	23 June
Asturias	12 September	20 June	15 September	23 June
Baleares	12 September	22 June	12 September	22 June
Canarias	8 September	22 June	12 September	22 June
Cantabria <sup>(3)</sup>	8 September	23 June	12 September	27 June
Castilla y León	12 September	23 June	19 September	23 June
Castilla-La Mancha	12 September	23 June	15 September	28 June
Cataluña	12 September	21 June	12 September <sup>(2)</sup>	21 June
Ceuta	8 September	22 June	8 September	22 June
Extremadura	13 September	21 June	13 September <sup>(2)</sup>	21 June <sup>(2)</sup>
Galicia	12 September	23 June	15 September	23 June
La Rioja	9 September	23 June	12 September	26 June
Madrid	8 September	22 June	12 September <sup>(2)</sup>	22 June
Melilla	13 September	22 June	13 September	22 June
Región de Murcia <sup>(4)</sup>	5 September	27 June	12 September	26 June
Navarra <sup>(5)</sup>	Not before 7 September	Not later 20 June	Not before 9 September	Not later 16 June
País Vasco <sup>(5)</sup>	Not before 7 September	Not later 23 June	Not before 7 September	Not later 21 June
C. Valencia	8 September	20 June	8 September	16 June

#### Additional notes:

<sup>(1)</sup> In the last year of post-compulsory upper general secondary education, classes end up two, three or four weeks earlier than in the rest of stages. This time is used to prepare the university admission examinations (and final evaluation of *Bachillerato*, among others).

<sup>(2)</sup> In the Autonomous Community of Aragón: in upper general secondary education, the beginning is 15 September. In the Autonomous Community of Cataluña: in lower and upper general secondary education, the beginning may be delayed until 14 September. In the Autonomous Community of Extremadura: in upper general secondary education, the beginning is 14 September and, regarding the end, the deadline date will be determined using a circular. In the Autonomous Community of Madrid: 1st grade of general secondary education begins on 12 September while the rest of grades begin on 13 September.

<sup>(3)</sup> In the Autonomous Community of Cantabria: days 31 October, 2-4 November and 23, 24, 27 and 28 February are not considered school days.

<sup>(4)</sup> In the Autonomous Community of Región de Murcia: the beginning and end periods vary according to municipalities. In fact, these belong to the earlier beginning day, in some municipalities, and to the latest end day, among other.

<sup>(5)</sup> In these Autonomous Communities, schools are free to establish their own calendar taking into account the limit starting and ending dates established by the educational authorities.

Source: School calendars of the Autonomous Communities and the Cities of Ceuta and Melilla.

## SWEDEN

### Organisation of school time in compulsory education (*grundskola*) and in general upper secondary education (*gymnasieskola*) 2016/17 school year

	Single structure compulsory education ( <i>grundskola</i> )	General upper secondary education ( <i>gymnasieskola</i> )
<b>Starting date of students' school year</b>	Late in August	Late in August
<b>End of students' school year</b>	Mid-June	Mid-June
According to the School Ordinance and the Upper Secondary School Ordinance, a school year consists of at least 178 school days and at least 12 holidays – the exact dates vary on regional and municipality level. In addition to the school days and the holidays, schools are able to conduct five in-service training days (at most) for the staff.		
<b>Autumn holidays</b>	31 October – 4 November 2016	31 October – 4 November 2016
<b>Christmas/New Year</b>	Start between 19-22 December 2016 End between 9-11 January 2017	Start between 19-22 December 2016 End between 9-11 January 2017
<b>Winter/Carnival</b>	One week between 13 February – 10 March 2017	One week between 13 February – 10 March 2017
<b>Spring/Easter</b>	One week between 10-21 April 2017	One week between 10-21 April 2017
<b>Summer</b>	About 10 weeks	About 10 weeks
<b>Public/religious holidays</b>	14 April 2017 (Good Friday) 17 April 2017 (Easter Monday) 25 May 2017 (Ascension Day) 6 June 2017 (National Day)	14 April 2017 (Good Friday) 17 April 2017 (Easter Monday) 25 May 2017 (Ascension Day) 6 June 2017 (National Day)
<b>Starting date of teachers' school year</b>	Mid-August	Mid-August
<b>End of teachers' school year</b>	Mid-June	Mid-June

Source: Eurydice.

#### **Additional notes:**

Sweden has a single structure compulsory school (9 years) with no differences between stages. Starting and finishing dates vary on regional and municipality levels, dates here are indicative.

Teachers usually start their work earlier for planning etc. Continuous professional development (CPD) is the responsibility of the employer and it can take place when the pupils are in school or not.

# SWITZERLAND

## Organisation of school time in primary and general secondary education 2016/17 school year

	Primary education	General secondary education
<b>Starting date of students' school year</b>	Staggered between 8 and 29 August 2016	Staggered between 8 and 29 August 2016
<b>End of students' school year</b>	Staggered between 14 June and 21 July 2017	Staggered between 14 June and 21 July 2017
<b>Autumn holidays</b>	Between 1 and 3 weeks staggered between 24 September and 6 November 2016	Between 1 and 3 weeks staggered between 24 September and 6 November 2016
<b>Christmas/New Year</b>	Between 1 and 2 weeks staggered between 22 December 2016 and 8 January 2017	Between 1 and 2 weeks staggered between 22 December 2016 and 8 January 2017
<b>Winter/Carnival</b>	Between 1 and 2 weeks staggered between 28 January and 12 March 2017	Between 1 and 2 weeks staggered between 28 January and 12 March 2017
<b>Spring/Easter</b>	Between 1 and 3 weeks staggered between 1 April and 28 May 2017	Between 1 and 2 weeks staggered between 1 April and 28 May 2017
<b>Third term</b>	-	-
<b>Summer</b>	Between 5 and 10 weeks staggered between 15 June and 27 August 2017	Between 5 and 10 weeks staggered between 15 June and 27 August 2017
<b>Public/religious holidays</b>	25 May 2017 (Ascension Day) 5 June 2017 (Whit Monday)	25 May 2017 (Ascension Day) 5 June 2017 (Whit Monday)
<b>Starting date of teachers' school year</b>	1 August 2016	1 August 2016
<b>End of teachers' school year</b>	31 July 2017	31 July 2017

Source: Eurydice

### Additional notes:

According to Switzerland's federal structure, the starting date/end of students' school year (for details see table I) and school holidays vary between cantons, in some cantons even between municipalities (for details see table II).

With a few exceptions the teachers' official school year starts 1st August and ends on 31 July. However, it is at the school's discretion to decide whether teachers are expected to start or end later (in order to attend meetings, to prepare for teaching, etc.).

The only national holiday is 1st August (National Day). All other public and religious holidays are fixed by the cantons. New Year's Day, Ascension and Christmas Day are the only holidays all cantons have in common. In most cantons Good Friday, Easter Monday, Whit Monday and Boxing Day are also official holidays.

## SWITZERLAND (CONTINUED)

**TABLE I: Specification for starting/end of students' school year and summer holidays**

Canton	Beginning of students' school year 2016/17	End of students' school year 2016/17	Summer holidays 2017
Aargau	8 August 2016	21 July 2017	22 July – 13 August
Appenzell Innerrhoden*	15 August 2016	30 June 2017	1 July – 13 August
Appenzell Ausserrhoden	15 August 2016	7 July 2017	8 July – 13 August
Bern*	15 August 2016	7 July 2017	8 July – 13 August
Basel-Landschaft	15 August 2016	30 June 2017	1 July – 13 August
Basel-Stadt	15 August 2016	30 June 2017	1 July – 13 August
Fribourg*	25 August 2016	7 July 2017	8 July – 23 August
Geneva	29 August 2016	30 June 2017	1 July – 27 August
Glarus	15 August 2016	30 June 2017	1 July – 13 August
Graubünden*	22 August 2016	30 June 2017	1 July – 20 August
Jura	15 August 2016	30 June 2017	1 July – 20 August
Lucerne*	22 August 2016	7 July 2017	8 July – 20 August
Neuchâtel	15 August 2016	30 June 2017	1 July – 13 August
Nidwalden*	22 August 2016	7 July 2017	8 July – 20 August
Obwalden*	22 August 2016	7 July 2017	8 July – 20 August
St. Gallen	15 August 2016	7 July 2017	8 July – 13 August
Schaffhausen	15 August 2016	7 July 2017	8 July – 13 August
Solothurn	16 August 2016	7 July 2017	8 July – 13 August
Schwyz*	22 August 2016	7 July 2017	8 July – 20 August
Thurgau	15 August 2016	7 July 2017	8 July – 13 August
Ticino	29 August 2016	14 June 2017	15 June – 27 August
Uri*	15 August 2016	30 June 2017	1 July – 20 August
Vaud	22 August 2016	30 June 2017	1 July – 20 August
Valais*	18 August 2016	23 June 2017	24 June – 15 August
Zug	22 August 2016	7 July 2017	8 July – 20 August
Zurich*	22 August 2016	14 July 2017	15 July – 20 August

\* with variation between regions/municipalities

## SWITZERLAND (CONTINUED)

**TABLE II: Specification of shorter holiday periods**

Canton	Autumn 2016	Christmas / New Year 2016/17	Winter 2017	Spring / Easter 2017
Aargau*	1-16 Oct.	23 Dec. – 8 Jan.	variable	8-23 April
Appenzell Innerrhoden*	8-23 Oct.	24 Dec. – 8 Jan.	24 Feb. – 5 March	8-23 April
Appenzell Ausserrhoden	8-23 Oct.	24 Dec. – 3 Jan.	variable	8-23 April
Bern*	24 Sept. – 16 Oct.	24 Dec. – 8 Jan.	variable	8-23 April
Basel-Landschaft*	1-16 Oct.	24 Dec. – 2 Jan.	25 Feb. – 12 March	8-23 April
Basel-Stadt	1-16 Oct.	24 Dec. – 3 Jan.	25 Feb. – 12 March	12-23 April
Fribourg*	15-30 Oct.	24 Dec. – 8 Jan.	25 Feb. – 5 March	8-23 April
Geneva	22-30 Oct.	24 Dec. – 8 Jan.	11 – 19 Feb.	13-23 April
Glarus	8-23 Oct.	24 Dec. – 8 Jan.	28 Jan. – 5 Feb.	6-23 April
Graubünden*	8-23 Oct.	24 Dec. – 8 Jan.	25 Feb. – 5 March	15-30 April
Jura	1-16 Oct.	24 Dec. – 8 Jan.	11-19 Feb.	1-17 April
Lucerne*	1-16 Oct.	24 Dec. – 8 Jan.	18 Feb. – 5 March	14-30 April
Neuchâtel	1-16 Oct.	24 Dec. – 8 Jan.	25 Feb. – 5 March	1-17 April
Nidwalden*	1-16 Oct.	24 Dec. – 8 Jan.	18 Feb. – 5 March	14-30 April
Obwalden*	1-16 Oct.	24 Dec. – 8 Jan.	18 Feb. – 5 March	14-30 April
St. Gallen	1-23 Oct.	24 Dec. – 8 Jan.	variable	8-23 April
Schaffhausen	1-23 Oct.	24 Dec. – 2 Jan.	28 Jan. – 12 Feb.	15-30 April
Solothurn*	1-23 Oct.	24 Dec. – 8 Jan.	4-19 Feb.	8-23 April
Schwyz*	1-16 Oct.	24 Dec. – 8 Jan.	25 Feb. – 5 March	29 April – 14 May
Thurgau	8-23 Oct.	24 Dec. – 2 Jan.	28 Jan. – 5 Feb.	1-17 April
Ticino	29 Oct. – 6 Nov.	24 Dec. – 6 Jan.	25 Feb. – 5 March	14-23 April
Uri*	8-23 Oct.	24 Dec. – 8 Jan.	18 Feb. – 5 March	29 April – 14 May
Vaud	15-30 Oct.	23 Dec. – 8 Jan.	18-26 Feb.	8-23 April
Valais*	22 Oct. – 6 Nov.	19 Dec. – 3 Jan.	25 Feb. – 5 March	14-23 April
Zug	8-23 Oct.	22 Dec. – 4 Jan.	4-19 Feb.	15-30 April
Zurich*	8-23 Oct.	24 Dec. – 8 Jan.	variable	15-30 April

\* with variation between regions/municipalities



## TURKEY

### Organisation of school time in primary and general secondary education 2016/17 school year

	Primary education	General secondary education
<b>Starting date of students' school year</b>	19 September 2016 (1st grade – 12 September 2016)	19 September 2016 (1st grade – 12 September 2016)
<b>End of students' school year</b>	9 June 2017	9 June 2017
<b>Christmas/New Year</b>	1 January 2017	1 January 2017
<b>Winter/Carnival</b>	2 weeks 23 January – 3 February 2017	2 weeks 23 January – 3 February 2017
<b>Summer</b>	13 weeks 9 June – 18 September 2017	13 weeks 9 June – 18 September 2017
<b>Public/religious holidays</b>	11-15 September 2016 (4.5 days – religious holiday) 28-29 October 2016 (1.5 days – Republic Day) 23 April 2017 (Children's Day) 1 May 2017 (Labour Day) 19 May 2017 (Youth and Sport Day)	11-15 September 2016 (4.5 days – religious holiday) 28-29 October 2016 (1.5 days – Republic Day) 23 April 2017 (Children's Day) 1 May 2017 (Labour Day) 19 May 2017 (Youth and Sport Day)
<b>Starting date of teachers' school year</b>	Beginning September	Beginning September
<b>End of teachers' school year</b>	Beginning July	Beginning July

Source: Eurydice.

#### **Additional notes:**

In primary and general secondary education, a school year must contain at least 180 days. A school year runs 9 months from September to June.

A school year is divided into two parts: at the end of a semester, there is a two-week holiday, called mid-school year holiday. The summer holidays are between June and September. Decisions on ending/starting semester dates are made by the Ministry.

Source: The work schedule of Ministry of National Education.

## UNITED KINGDOM – ENGLAND

### Organisation of school time in primary and general secondary education 2016/17 school year

	Primary education	General secondary education
<b>Starting date of students' school year</b>	Between 25 August and 7 September 2016	Between 25 August and 7 September 2016
<b>End of students' school year</b>	Between 14 and 28 July 2017	Between 14 and 28 July 2017
<b>Autumn holidays</b>	1 week between 12 October and 4 November 2016	1 week between 12 October and 4 November 2016
<b>Christmas/New Year</b>	2 weeks between 19 December 2016 and 6 January 2017	2 weeks between 19 December 2016 and 6 January 2017
<b>Winter/Carnival</b>	1 week between 13 and 24 February 2017	1 week between 13 and 24 February 2017
<b>Spring/Easter</b>	2 weeks between 30 March and 25 April 2017	2 weeks between 30 March and 25 April 2017
<b>Third term</b>	1 week between 29 May and 9 June 2017	1 week between 29 May and 9 June 2017
<b>Summer</b>	6 weeks between 14 July and 23 August 2017	6 weeks between 14 July and 23 August 2017
<b>Public/religious holidays</b>	1 May 2017 – early May bank holiday (see Additional notes) 29 May 2017 – Spring bank holiday (within third term holiday)	1 May 2017 – early May bank holiday (see Additional notes) 29 May 2017 – late May bank holiday (within third term holiday)
<b>Starting date of teachers' school year</b>	First week of September 2016	First week of September 2016
<b>End of teachers' school year</b>	Between 14 and 28 July 2017	Between 14 and 28 July 2017

Source: Eurydice.

#### Additional notes:

The school year is normally divided into three terms, each of which is divided into two half terms separated by a half term holiday. The dates of school holidays take into account and cover most public holidays including Easter.

Maintained schools are required to be open for a minimum of 380 half-day sessions each year, in accordance with the Education (School Day and School Year) (England) Regulations 1999, as amended. Within this framework, term dates are determined by the local authority for community and voluntary-controlled schools and by the school governing body for community and voluntary-aided schools. Teachers are required to be available for five additional days when pupils are not present, i.e. for 195 days in total.

For academies, there are no regulations; the academy trust that determines the number of school sessions and the term dates. The recent growth in the number of academies means that approximately 70 per cent of secondary and 30 per cent of primary schools in England are responsible for setting their own term dates.

The table shows the most common patterns for term dates and holidays set by LAs.

Schools with a significant number of pupils who will be celebrating non-Christian religious festivals (for example Eid-UI-Adha, Eid-UI-Fitr, Guru Nanak's birthday, Diwali) may consider making these optional closure days.

## UNITED KINGDOM – WALES

### Organisation of school time in primary and general secondary education 2016/17 school year

	Primary education	General secondary education
<b>Starting date of students' school year</b>	1 September 2016	1 September 2016
<b>End of students' school year</b>	21 July 2017	21 July 2017
<b>Autumn holidays</b>	1 week 24 to 28 October 2016	1 week 24 to 28 October 2016
<b>Christmas/New Year</b>	2 weeks 1 day 19 December 2016 to Monday 2 January 2017	2 weeks 1 day 19 December 2016 to Monday 2 January 2017
<b>Winter/Carnival</b>	1 week 20 to 24 February 2017	1 week 20 to 24 February 2017
<b>Spring/Easter</b>	2 weeks 10 to 21 April 2017	2 weeks 10 to 21 April 2017
<b>Third term</b>	1 week 29 May to 2 June 2017	1 week 29 May to 2 June 2017
<b>Summer</b>	6 weeks 24 July to 4 September 2017	6 weeks 24 July to 4 September 2017
<b>Public/religious holidays</b>	1 May 2017 – early May bank holiday (see Additional notes) 29 May 2017 – late May Bank Holiday (within third term holiday)	1 May 2017 – early May bank holiday (see Additional notes) 29 May 2017 – late May Bank Holiday (within third term holiday)
<b>Starting date of teachers' school year</b>	First week of September 2016	First week of September 2016
<b>End of teachers' school year</b>	Third week of July 2017	Third week of July 2017

Source: Eurydice. 2016/17 from the Ministerial decision on school term dates from 2016/17  
<http://gov.wales/topics/educationandskills/schoolshome/fundingschools/school-governance/school-term-and-holiday-dates/?lang=en>

#### Additional notes:

Traditionally, the school year is divided into three terms, each of which is divided into two half terms separated by a half term holiday. The dates of school holidays are normally planned to take into account and cover most national public holidays including Easter.

The length of the school year, 380 half day sessions, is laid down centrally. Teachers are required to be available for five additional days when pupils are not present, i.e. for 195 days in total.

The Education (Wales) Act 2014 enables the Welsh Ministers to direct local authorities and the governing bodies of voluntary aided and foundation schools on what their term dates must be in specific circumstances, so as to harmonise dates across Wales. Harmonised dates were first set for the 2016/17 school year.

## UNITED KINGDOM – NORTHERN IRELAND

### Organisation of school time in primary and general secondary education 2016/17 school year

	Primary education	General secondary education
<b>Starting date of students' school year</b>	1 September 2016	1 September 2016
<b>End of students' school year</b>	30 June 2017	30 June 2017
<b>Autumn holidays</b>	2 days 31 October to 1 November 2016	2 days 31 October to 1 November 2016
<b>Christmas/New Year</b>	2 weeks 21 December 2016 – 2 January 2017	2 weeks 21 December 2016 – 2 January 2017
<b>Winter/Carnival</b>	2 days 16-17 February 2017	2 days 16-17 February 2017
<b>Spring/Easter</b>	1.5 weeks 13-21 April 2017	1.5 weeks 13-21 April 2017
<b>Third term</b>	–	–
<b>Summer</b>	9 weeks Between 1 July and 31 August 2017	9 weeks Between 1 July and 31 August 2017
<b>Public/religious holidays</b>	17 March 2017 – St Patrick's Day (not all schools) 1 May 2017 – early May bank holiday 29 May 2017 – late May bank holiday	17 March 2017 – St Patrick's Day (not all schools) 1 May 2017 – early May bank holiday 29 May 2017 – late May bank holiday
<b>Starting date of teachers' school year</b>	1 September 2016	1 September 2016
<b>End of teachers' school year</b>	30 June 2017	30 June 2017

Source: Eurydice. <https://www.education-ni.gov.uk/articles/school-holidays#toc-1>

#### Additional notes:

Schools are required to be in operation for 200 days. The number of days that pupils are taught in the classroom may vary from 185 to 190 days when optional closing days, teacher training days and School Development Days (SDDs) are taken into account. Decisions on when to take these days are set, depending on the legal category of the school, by the Education Authority or board of governors. The five optional closing days may be taken as an extension to the Easter, Christmas or summer holidays or to cover closure in exceptional circumstances, for example, the death of someone connected with the school or a planned event such as a move to new premises/building work or a religious holiday. Teachers are required to be available for work on 195 days, of which no more than 190 days should involve teaching children in the classroom. The remaining five non-contact days are used for training purposes. Schools may also avail themselves of up to five School Development Days (SDDs) for the purpose of school improvement and school/staff development. For further information see [Circular 2013/09](#).

## UNITED KINGDOM – SCOTLAND

Organisation of school time in primary and general secondary education 2016/17 school year		
	Primary education	General secondary education
<b>Starting date of students' school year</b>	Mid-August 2016	Mid-August 2016
<b>End of students' school year</b>	End June/early July 2017	End June/early July 2017
<b>Autumn holidays</b>	All schools will take from 1 to 2 weeks between 5 and 23 October 2016 and some will also take from 1 to 2 days in September 2016	All schools will take from 1 to 2 weeks between 5 and 23 October 2016 and some will also take from 1 to 2 days in September 2016
<b>Christmas/New Year</b>	Around 2 weeks between 21 of December 2016 to 6 January 2017	Around 2 weeks between 21 of December 2016 to 6 January 2017
<b>Winter/Carnival</b>	From 1 day to 1 week between 8 and 19 February 2017	From 1 day to 1 week between 8 and 19 February 2017
<b>Spring/Easter</b>	About 2 weeks between 1 and 17 April 2017	About 2 weeks between 1 and 17 of April 2017
<b>Summer mid-term holidays</b>	Generally schools will take at least 1 day or 2 days in May 2017 but some schools will also take up to 3 days between 4 and 30 May 2017	Generally schools will take at least 1 day or 2 days in May 2017 but some schools will also take up to 3 days between 4 and 30 May 2017
<b>Summer</b>	End June/early July 2017	End June/early July 2017
<b>Public/religious holidays</b>	Up to 3 days	Up to 3 days
<b>Starting date of teachers' school year</b>	Mid-August 2016	Mid-August 2016
<b>End of teachers' school year</b>	End June/early July 2017	End June/early July 2017

Source: Eurydice.

### Additional notes:

In Scotland, pupils attend school for 190 days a year. The teachers' school year is longer by 5 in-service days (195 days). There are around 30 holiday days during term time (i.e. excluding summer holidays and weekends). With the summer holidays it would be closer to 65 days in total, however this would vary between schools due to different start and end dates.

As school holidays (and in-service days) are not fixed nationally, but by each of the 32 local education authorities, term dates vary from one authority to another. There are no differences between primary and secondary schools.





## **The Organisation of School Time in Europe. Primary and General Secondary Education – 2016/17**

The school calendar contains national data on the length of the school year, the start and the end dates of each school year, the timing and length of school holidays and the number of school days. It covers both primary and general secondary education and key points are illustrated by comparative figures. The information is available for 37 countries.

---

The Eurydice Network's task is to understand and explain how Europe's different education systems are organised and how they work. The network provides descriptions of national education systems, comparative studies devoted to specific topics, indicators and statistics. All Eurydice publications are available free of charge on the Eurydice website or in print upon request. Through its work, Eurydice aims to promote understanding, cooperation, trust and mobility at European and international levels. The network consists of national units located in European countries and is co-ordinated by the EU Education, Audiovisual and Culture Executive Agency. For more information about Eurydice, see <http://ec.europa.eu/eurydice>.

